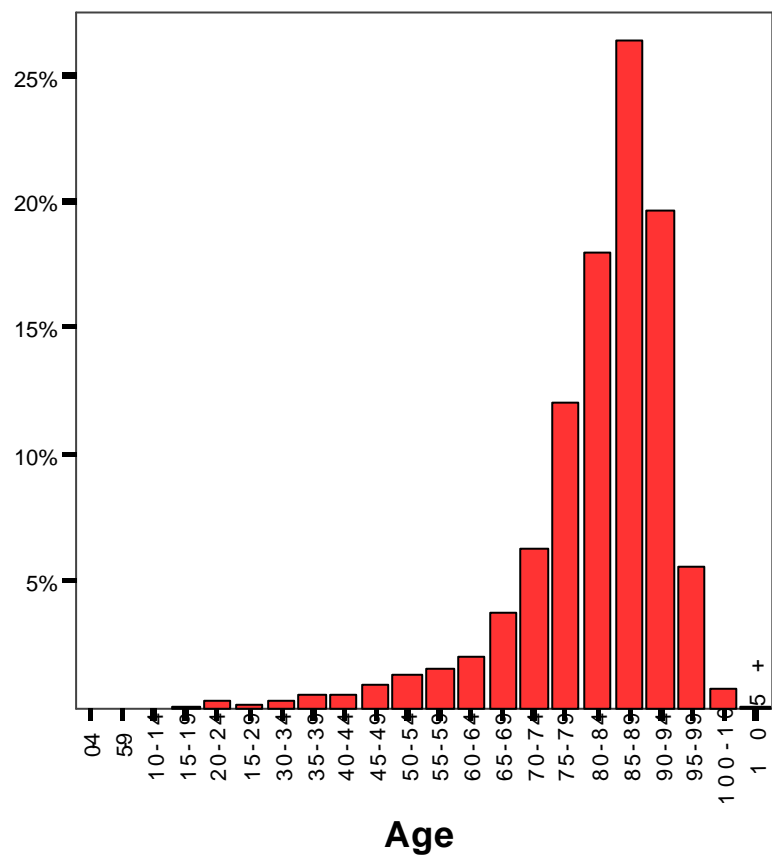


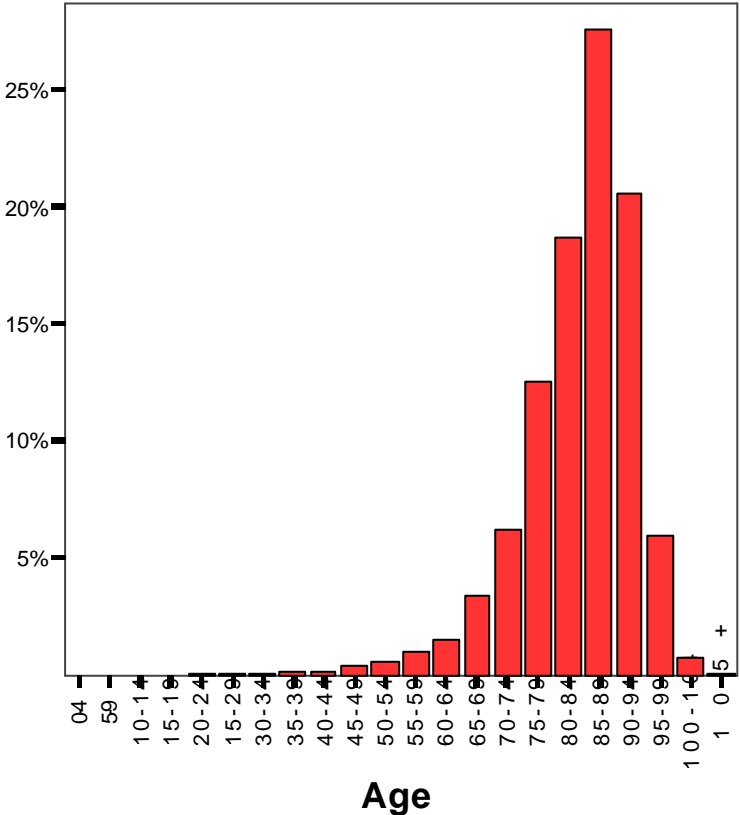
Analyse des données PLAISIR®
Octobre 1999

Données PLAISIR - Octobre 1999 – Distribution en classe de 5 ans (en %) de l'âge – Toute population



	Frequency	Percent
15-19	4	,0%
20-24	27	,2%
25-29	20	,2%
30-34	30	,3%
35-39	59	,5%
40-44	59	,5%
45-49	102	,9%
50-54	145	1,3%
55-59	184	1,6%
60-64	231	2,0%
65-69	437	3,8%
70-74	717	6,2%
75-79	1390	12,1%
80-84	2071	18,0%
85-89	3046	26,4%
90-94	2262	19,6%
95-99	650	5,6%
100-104	81	,7%
105+	2	,0%
Total	11517	100,0%

Données PLAISIR - Octobre 1999 - Distribution en classe de 5 ans (en %) de l'AGE – sans inst. psychosociaux et handicapés

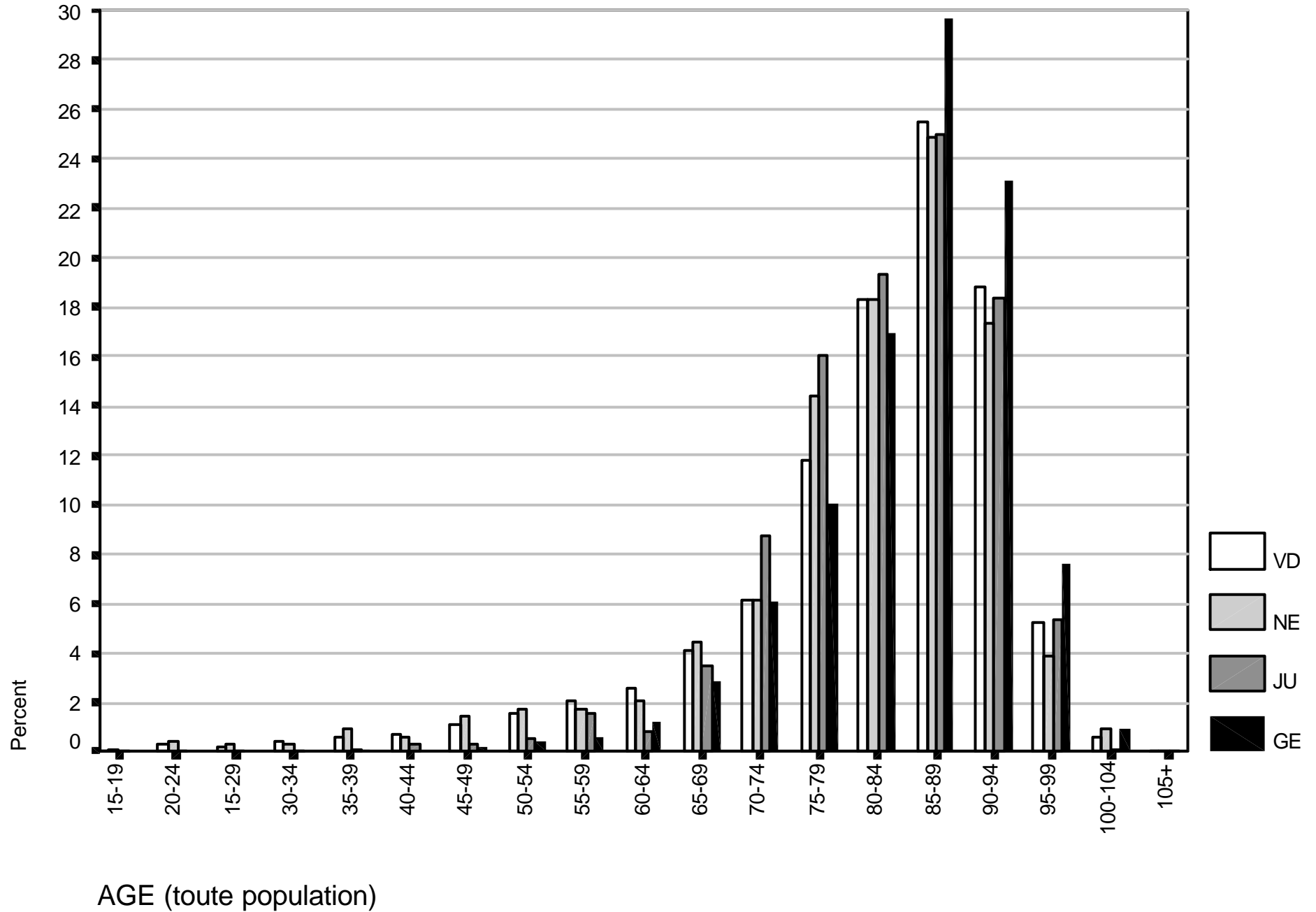


	Frequency	Percent
20-24	3	,0%
15-29	2	,0%
30-34	5	,0%
35-39	12	,1%
40-44	21	,2%
45-49	47	,4%
50-54	62	,6%
55-59	116	1,1%
60-64	175	1,6%
65-69	383	3,5%
70-74	687	6,3%
75-79	1372	12,5%
80-84	2055	18,8%
85-89	3031	27,7%
90-94	2256	20,6%
95-99	647	5,9%
100-104	81	,7%
105+	2	,0%
Total	10957	100,0%

Données PLAISIR - Octobre 1999 – Pyramide des âges (en %) des cantons – Toute population

AGE5		CANTON				Total
		VD	NE	JU	GE	
15-19	Count	1	3			4
	% within CANTON	0,0%	0,1%			0,0%
20-24	Count	18	9			27
	% within CANTON	0,3%	0,4%			0,2%
15-29	Count	14	6			20
	% within CANTON	0,3%	0,3%			0,2%
30-34	Count	22	7		1	30
	% within CANTON	0,4%	0,3%		0,0%	0,3%
35-39	Count	34	21	1	3	59
	% within CANTON	0,6%	0,9%	0,1%	0,1%	0,5%
40-44	Count	42	14	2	1	59
	% within CANTON	0,8%	0,6%	0,3%	0,0%	0,5%
45-49	Count	61	32	2	7	102
	% within CANTON	1,1%	1,4%	0,3%	0,2%	0,9%
50-54	Count	88	39	4	14	145
	% within CANTON	1,6%	1,7%	0,6%	0,5%	1,3%
55-59	Count	114	39	11	20	184
	% within CANTON	2,1%	1,7%	1,5%	0,7%	1,6%
60-64	Count	141	47	5	38	232
	% within CANTON	2,5%	2,1%	0,8%	1,3%	2,0%
65-69	Count	228	98	25	86	437
	% within CANTON	4,1%	4,4%	3,5%	2,8%	3,8%
70-74	Count	341	138	55	183	724
	% within CANTON	6,1%	6,2%	8,7%	6,0%	6,3%
75-79	Count	654	321	110	305	1394
	% within CANTON	11,8%	14,4%	16,0%	10,0%	12,1%
80-84	Count	1013	409	133	516	2076
	% within CANTON	18,2%	18,3%	19,4%	17,0%	18,0%
85-89	Count	1415	555	174	902	3050
	% within CANTON	25,5%	24,8%	25,0%	29,7%	26,4%
90-94	Count	1042	388	130	702	2263
	% within CANTON	18,8%	17,4%	18,4%	23,1%	19,6%
95-99	Count	292	88	38	232	650
	% within CANTON	5,3%	3,9%	5,3%	7,6%	5,6%
100-104	Count	33	20	1	27	81
	% within CANTON	0,6%	0,9%	0,1%	0,9%	0,7%
105+	Count	1	1			2
	% within CANTON	0,0%	0,0%			0,0%
Total	Count	5554	2235	691	3037	11539
	% within CANTON	100,0%	100,0%	100,0%	100,0%	100,0%
	% of Total	48,1%	19,4%	6,2%	26,3%	100,0%

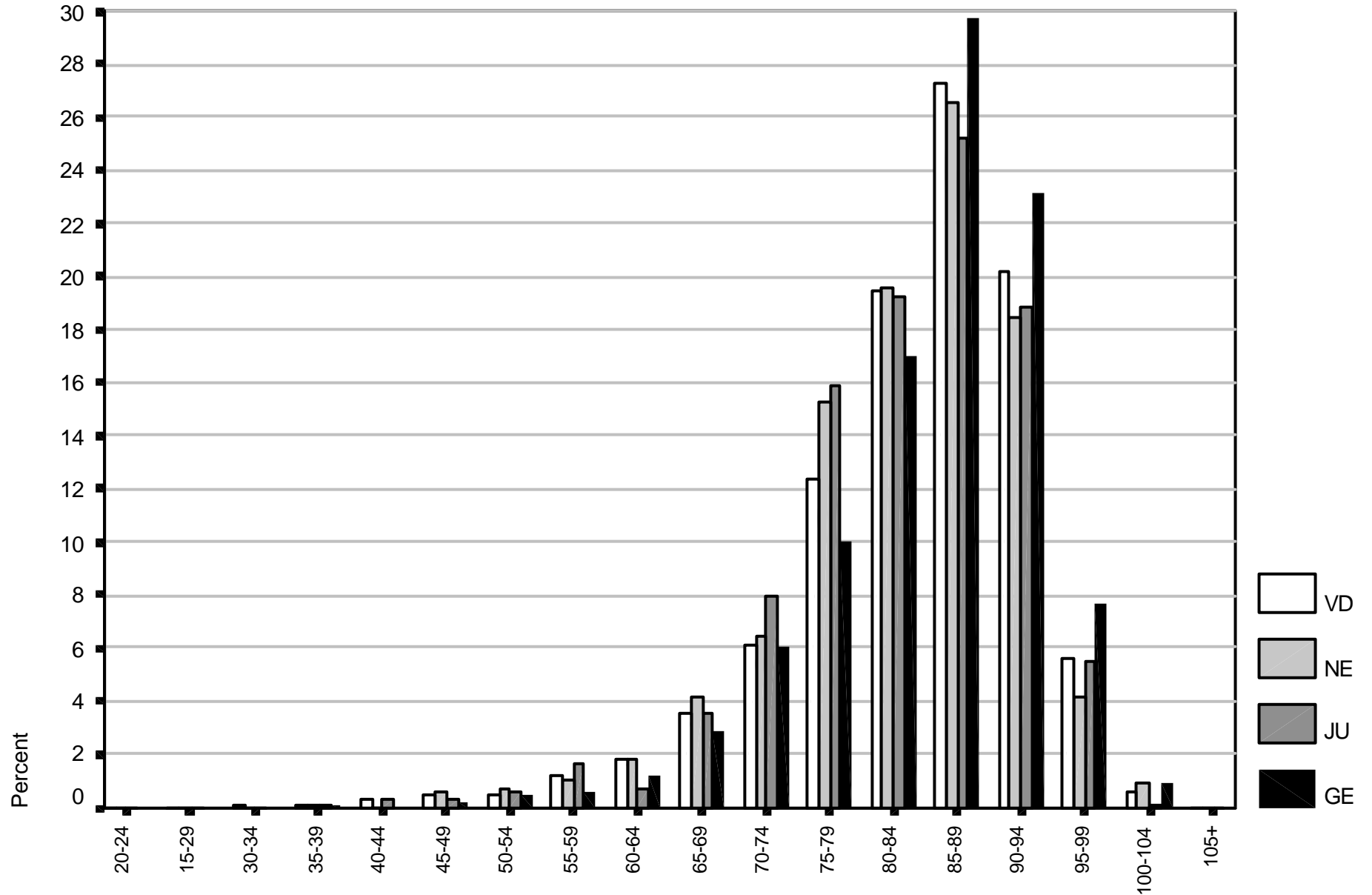
Données PLAISIR - Octobre 1999 – Distribution des pyramides d'âge selon les cantons (en %) – Toute population



**Données PLAISIR - Octobre 1999 – Pyramide des âges des cantons –
Population sans inst. psychosociaux et handicapés**

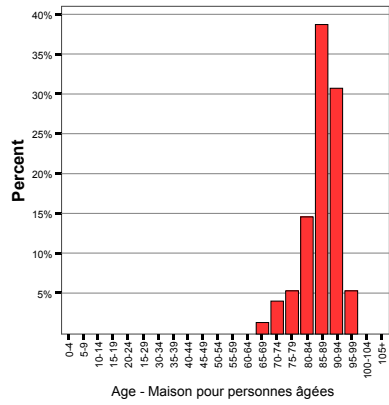
AGE5		CANTON				Total
		VD	NE	JU	GE	
20-24	Count	2	1			3
	% within CANTON	0,0%	0,0%			0,0%
15-29	Count	2				2
	% within CANTON	0,0%				0,0%
30-34	Count	4			1	5
	% within CANTON	0,1%			0,0%	0,0%
35-39	Count	5	3	1	3	12
	% within CANTON	0,1%	0,1%	0,1%	0,1%	0,1%
40-44	Count	18		2	1	21
	% within CANTON	0,4%		0,3%	0,0%	0,2%
45-49	Count	25	13	2	7	47
	% within CANTON	0,5%	0,6%	0,3%	0,2%	0,4%
50-54	Count	28	16	4	14	62
	% within CANTON	0,5%	0,8%	0,6%	0,5%	0,6%
55-59	Count	64	21	11	20	116
	% within CANTON	1,2%	1,0%	1,6%	0,7%	1,1%
60-64	Count	94	38	5	38	175
	% within CANTON	1,8%	1,8%	0,7%	1,3%	1,6%
65-69	Count	184	88	25	86	383
	% within CANTON	3,6%	4,2%	3,6%	2,8%	3,5%
70-74	Count	314	135	55	183	687
	% within CANTON	6,1%	6,4%	8,0%	6,0%	6,3%
75-79	Count	637	320	110	305	1372
	% within CANTON	12,4%	15,3%	15,9%	10,0%	12,5%
80-84	Count	997	409	133	516	2055
	% within CANTON	19,4%	19,5%	19,2%	17,0%	18,8%
85-89	Count	1400	555	174	902	3031
	% within CANTON	27,3%	26,5%	25,2%	29,7%	27,7%
90-94	Count	1038	386	130	702	2256
	% within CANTON	20,2%	18,4%	18,8%	23,1%	20,6%
95-99	Count	289	88	38	232	647
	% within CANTON	5,6%	4,2%	5,5%	7,6%	5,9%
100-104	Count	33	20	1	27	81
	% within CANTON	0,6%	1,0%	0,1%	0,9%	0,7%
105+	Count	1	1			2
	% within CANTON	0,0%	0,0%			0,0%
Total	Count	5135	2094	691	3037	10957
	% within CANTON	100,0%	100,0%	100,0%	100,0%	100,0%

Données PLAISIR - Octobre 1999 – Distribution des pyramides d'âge selon les cantons (en %) – Population sans inst. psychosociaux et handicapés

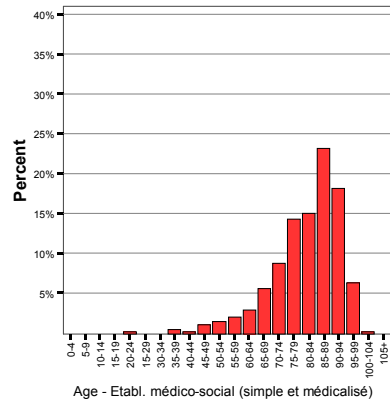


Age (Sans inst. psychosociaux et handicapés)

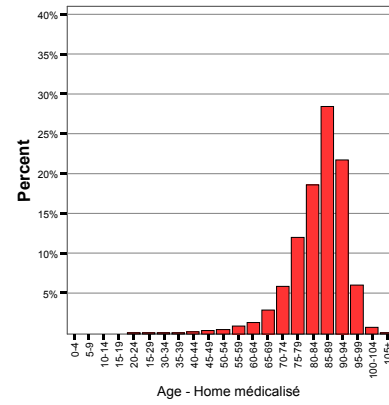
Données PLAISIR - Octobre 1999 – Pyramide des âges (en classe de 5 ans) selon les missions (%) – Valeurs calculées sur données brutes (toute population)



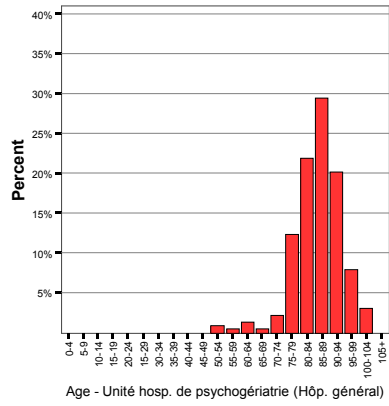
Mean = 86.88
Median = 88
N = 75
SDT = 5.96



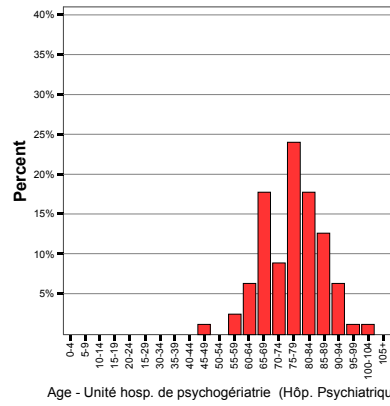
Mean = 81.23
Median = 84
N = 584
SDT = 11.45



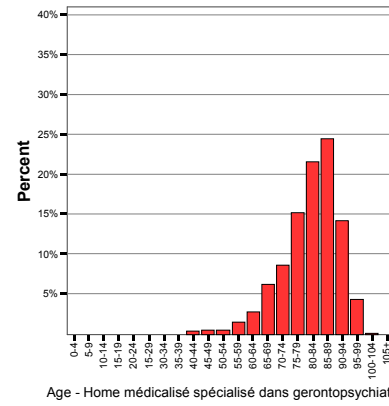
Mean = 84.05
Median = 86
N = 8799
SDT = 9.13



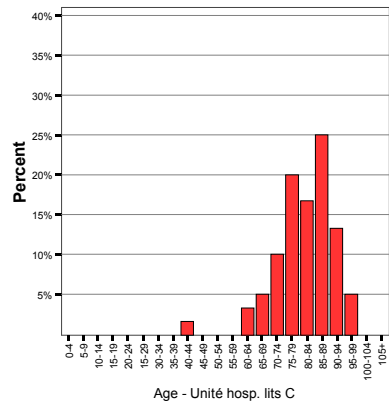
Mean = 86.61
Median = 86
N = 228
SDT = 7.87



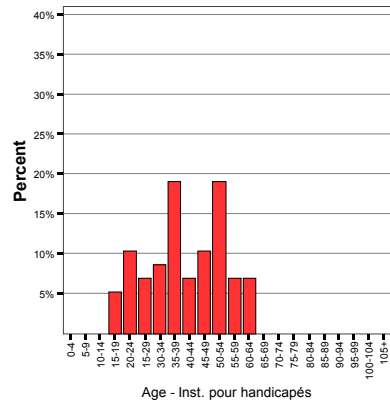
Mean = 76.52
Median = 78
N = 79
SDT = 9.80



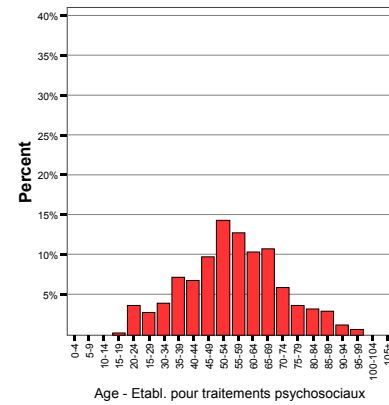
Mean = 81.51
Median = 83
N = 1132
SDT = 9.56



Mean = 81.28
Median = 81.50
N = 60
SDT = 9.60

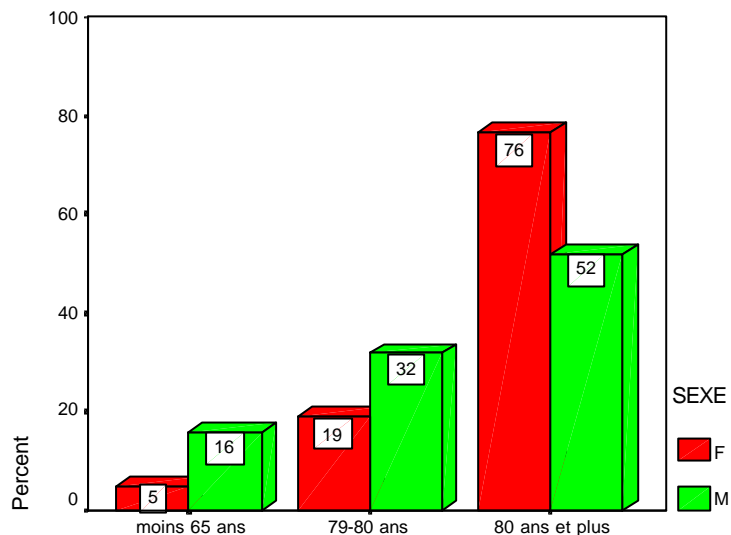


Mean = 40.55
Median = 40
N = 58
SDT = 12.69

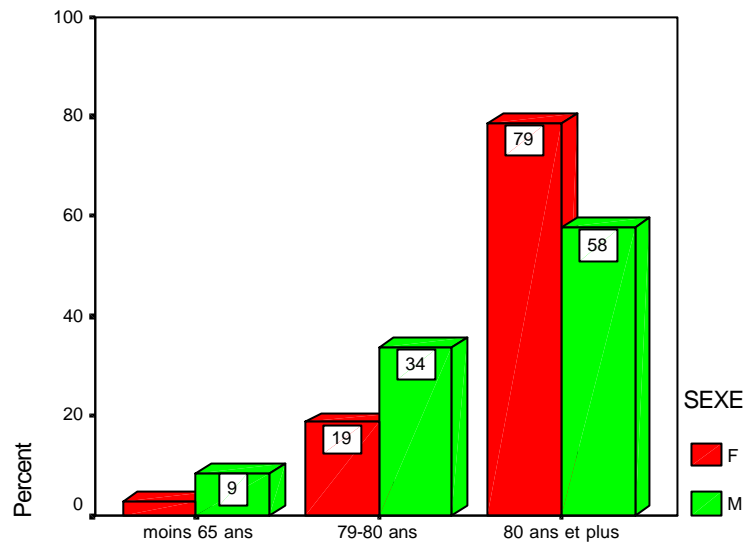


Mean = 55.31
Median = 55
N = 502
SDT = 16.23

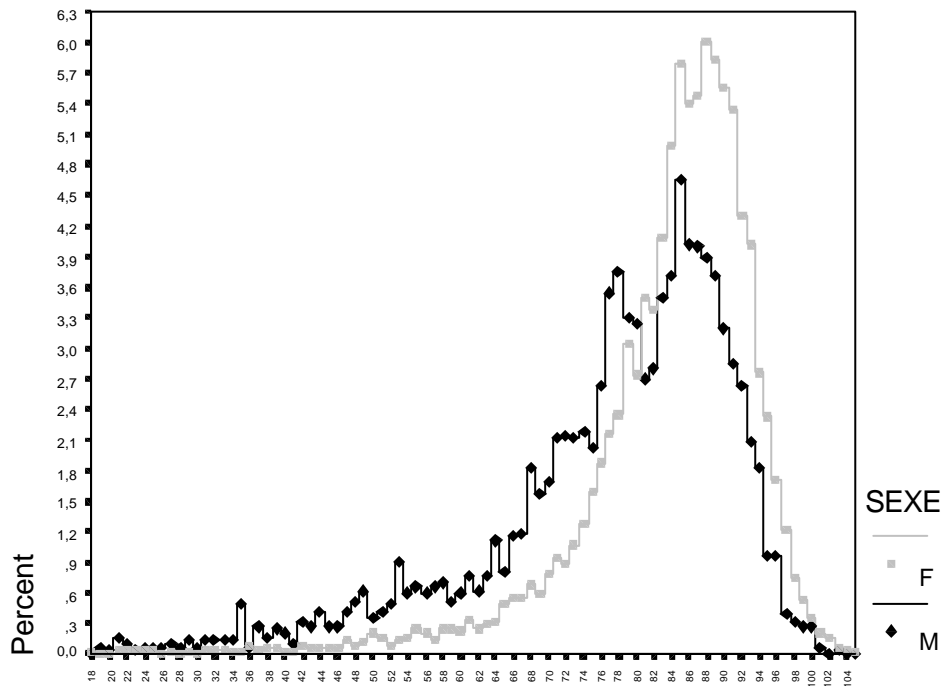
Données PLAISIR - Octobre 1999 – Distribution de la population PLAISIR selon le sexe (Toute population versus population sans les inst. psychosociaux et les handicapés)



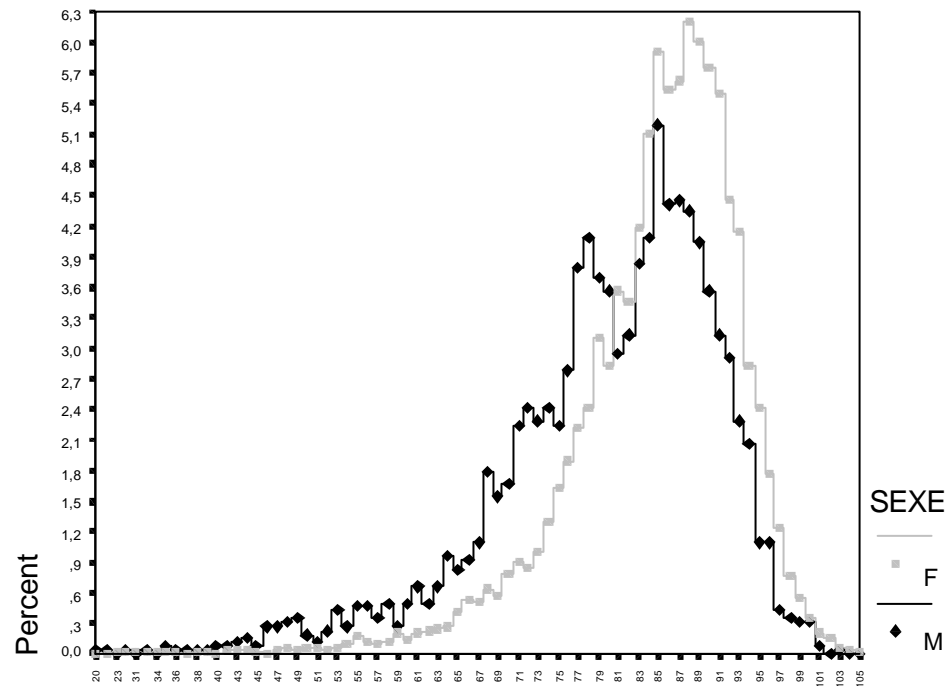
AGE (toute population)



AGE - sans inst. psychosociaux et handicapés



AGE (toute population)

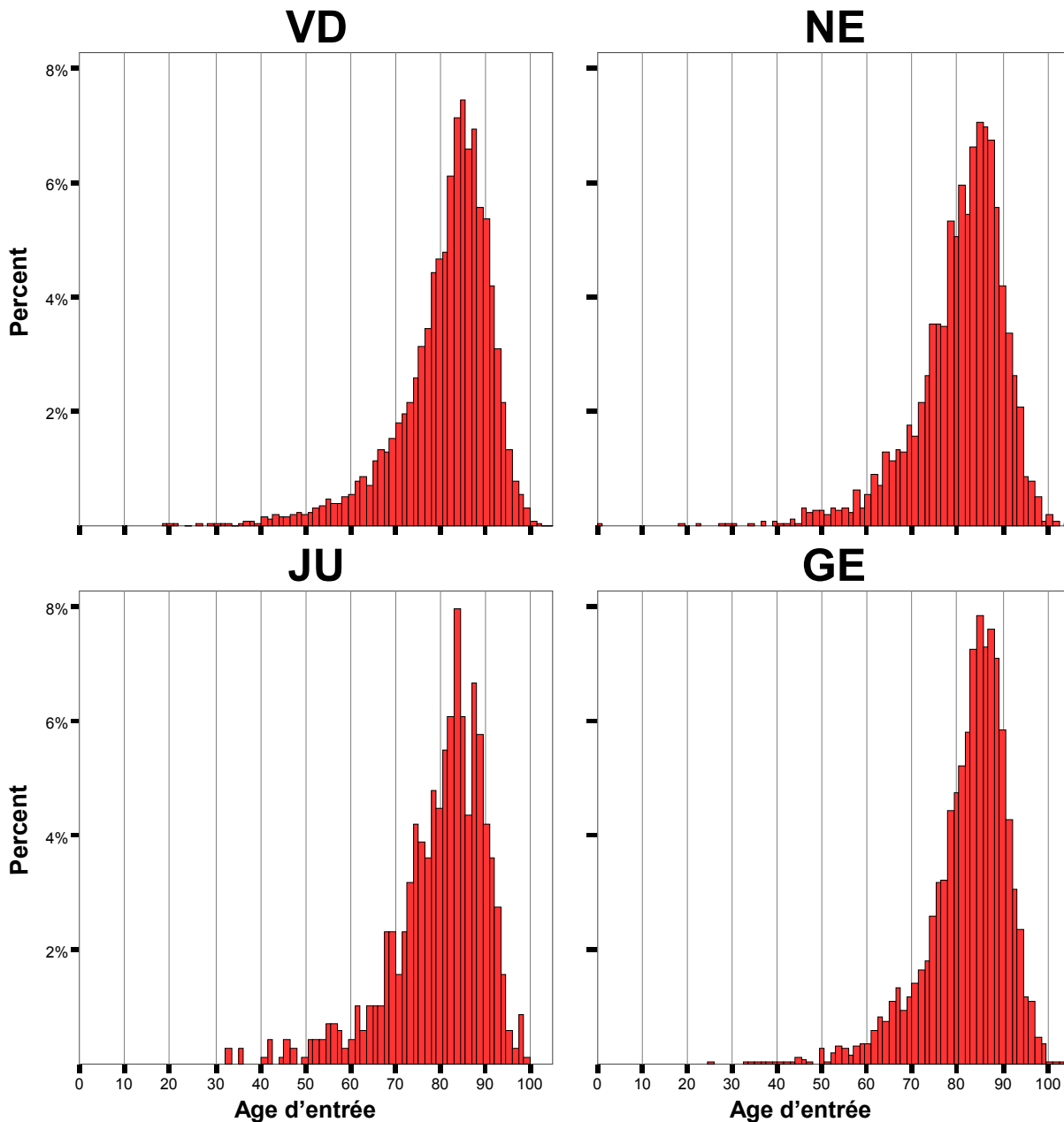


AGE (sans inst. psychosociaux et handicapés)

Pyramide des âges à l'entrée en établissement de soins PLAISIR
Structure de l'ensemble de la population selon les cantons
Octobre 1999
(sans inst. psychosociaux et handicapés)

N = 5135
 Mean = 80.85
 Median = 83
 SDT = 10.76

N = 2094
 Mean = 80.43
 Median = 82
 SDT = 10.39



N = 691
 Mean = 79.6
 Median = 81
 SDT = 10.71

N = 3037
 Mean = 82.2
 Median = 84
 SDT = 9.32

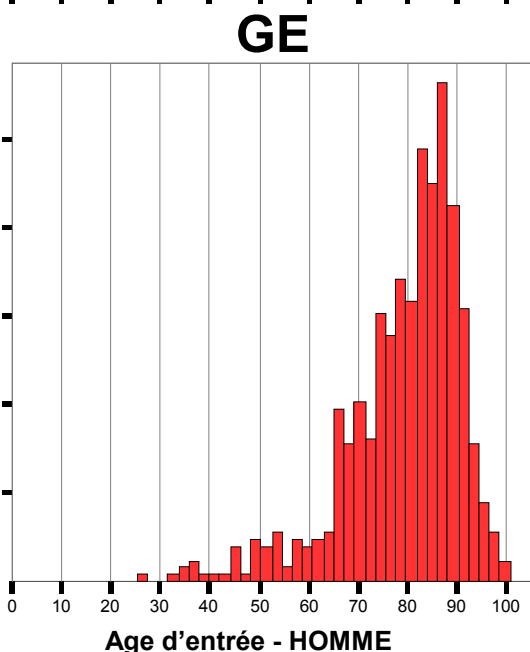
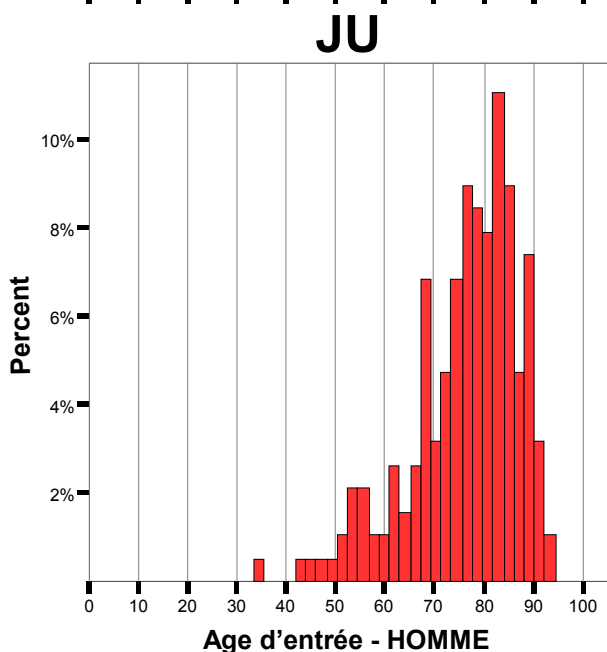
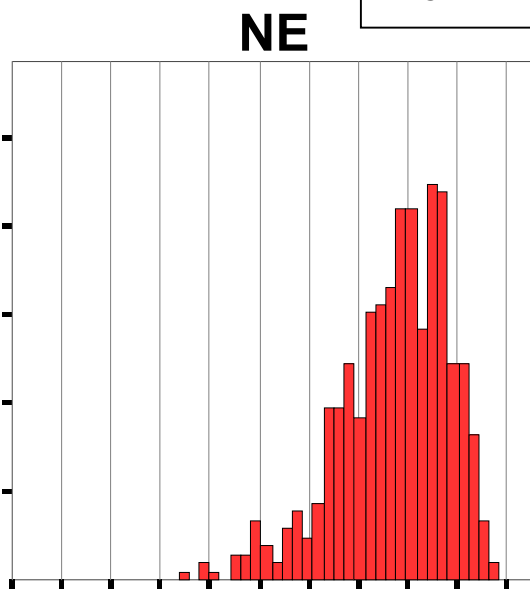
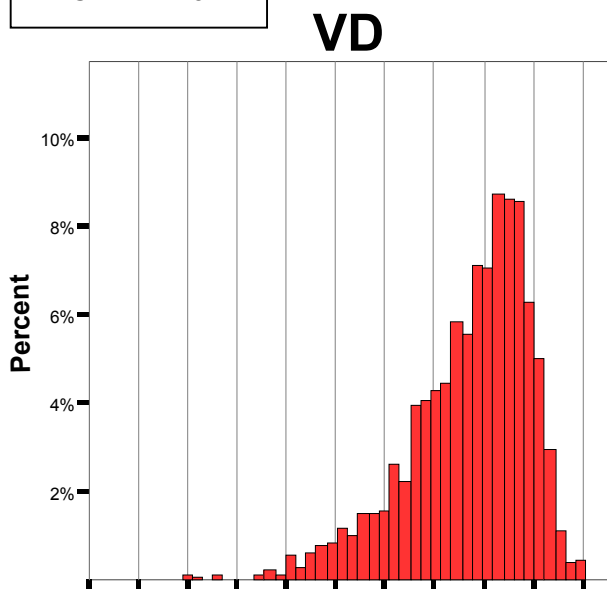
Pyramide des âges à l'entrée en établissement de soins PLAISIR

Structure pour la population masculine selon les cantons – octobre 1999

(sans inst. psychosociaux et handicapés)

N = 1264
 Mean = 76.9
 Median = 79
 SDT = 12.5

N = 514
 Mean = 77.2
 Median = 79
 SDT = 11.3



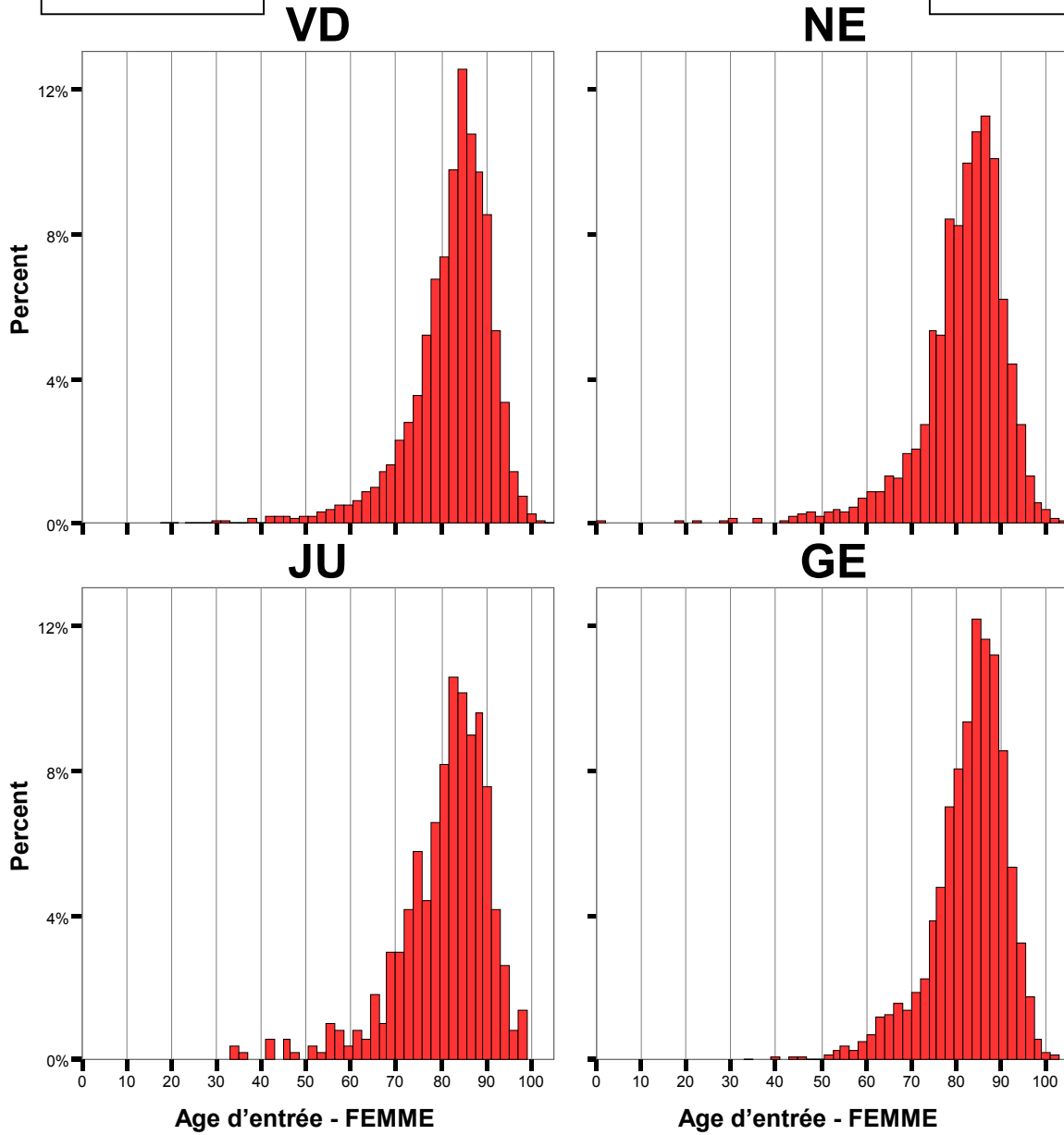
N = 190
 Mean = 76.4
 Median = 78
 SDT = 11.0

N = 614
 Mean = 79.2
 Median = 82
 SDT = 11.9

Pyramide des âges à l'entrée en établissement de soins PLAISIR
Structure pour la population féminine selon les cantons – octobre 1999
(sans inst. psychosociaux et handicapés)

N = 3871
 Mean = 82.2
 Median = 84
 SDT = 9.8

N = 1580
 Mean = 81.5
 Median = 83
 SDT = 9.9



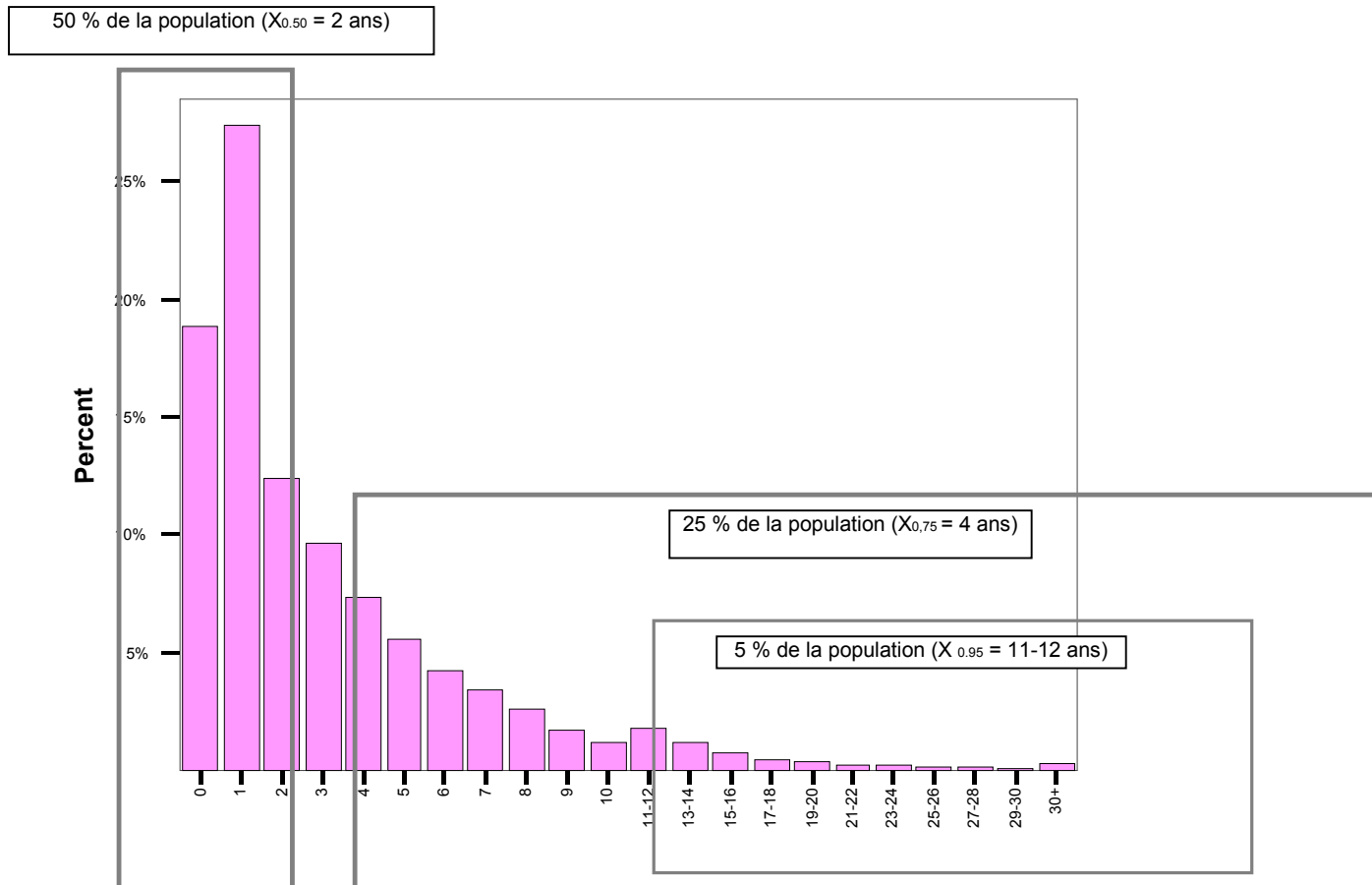
N = 501
 Mean = 80.8
 Median = 82
 SDT = 10.4

N = 2423
 Mean = 82.9
 Median = 84
 SDT = 8.4

Données PLAISIR - Octobre 1999 – Durée de séjour en année de la population résidante PLAISIR

Durée de séjour en année

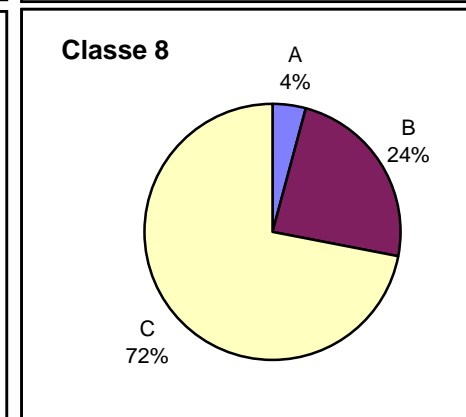
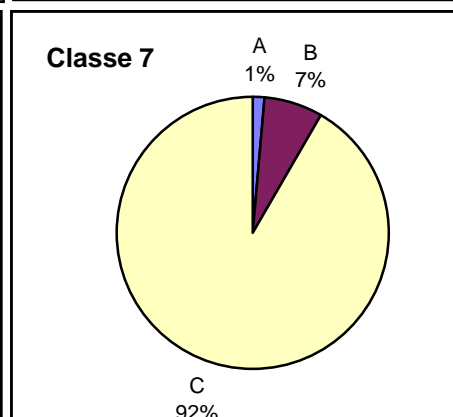
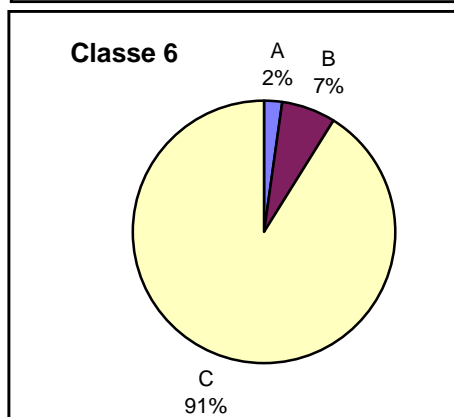
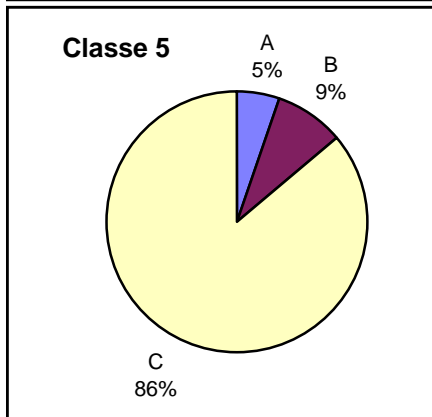
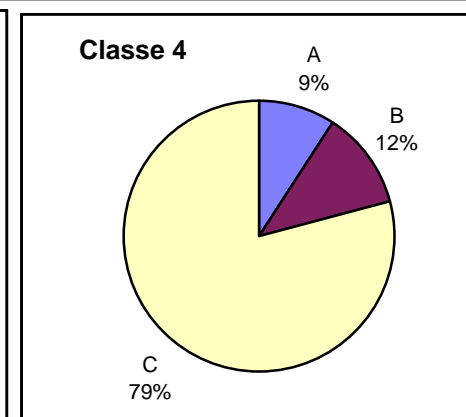
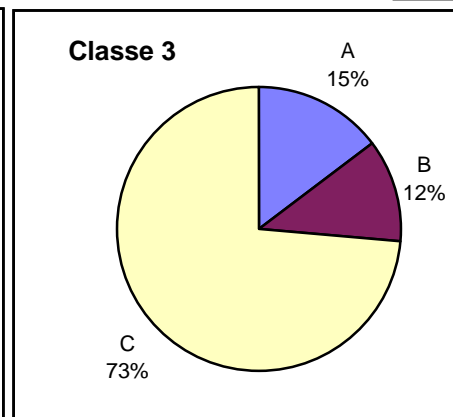
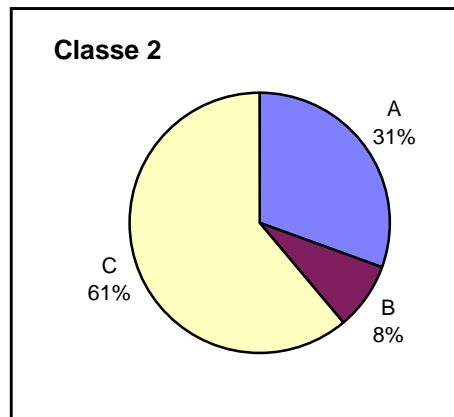
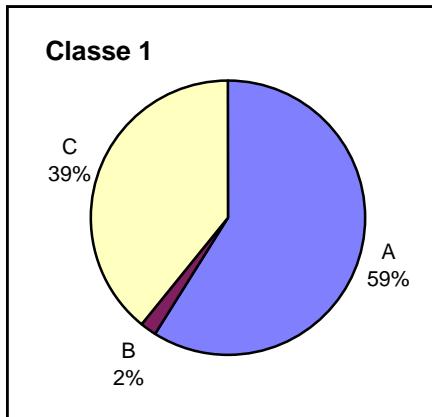
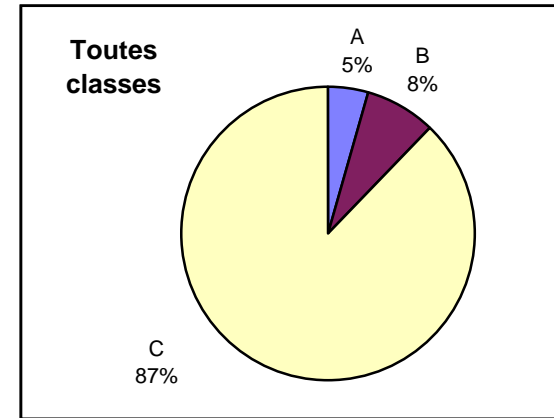
		Frequency	Percent
Valid	0	2169	18,8%
	1	3154	27,4%
	2	1422	12,3%
	3	1113	9,7%
	4	841	7,3%
	5	639	5,5%
	6	483	4,2%
	7	395	3,4%
	8	294	2,6%
	9	198	1,7%
	10	140	1,2%
	11-12	203	1,8%
	13-14	137	1,2%
	15-16	84	0,7%
	17-18	52	0,5%
	19-20	41	0,4%
	21-22	26	0,2%
	23-24	27	0,2%
	25-26	19	0,2%
27-28	16	0,1%	
29-30	6	0,1%	
30+	37	0,3%	
	Total	11496	99,8
Missing	System	21	0,2
Total		11517	100,0



Durée de séjour en année - % par classe d'âge

Données PLAISIR - Octobre 1999 – Répartition des prestations OPAS par classe - Tous cantons

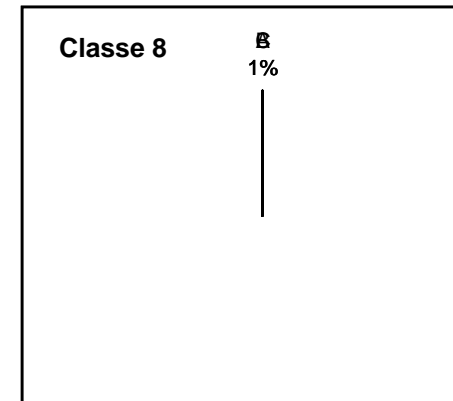
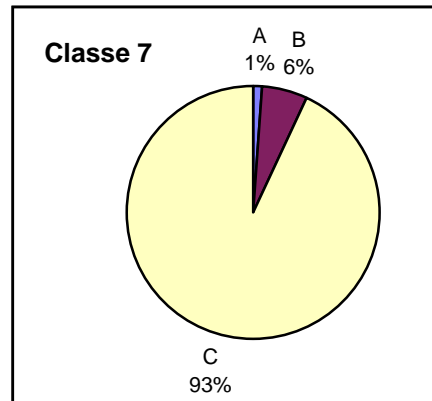
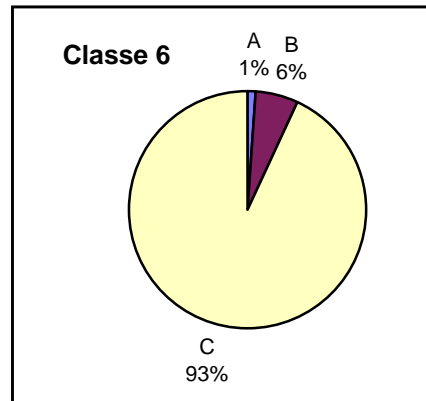
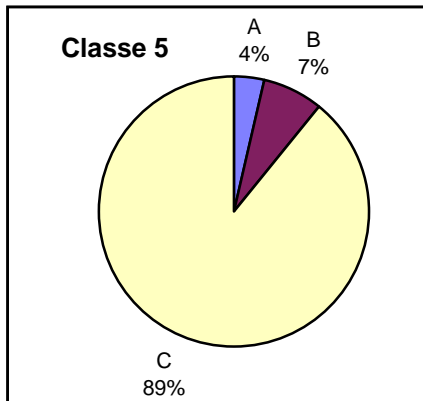
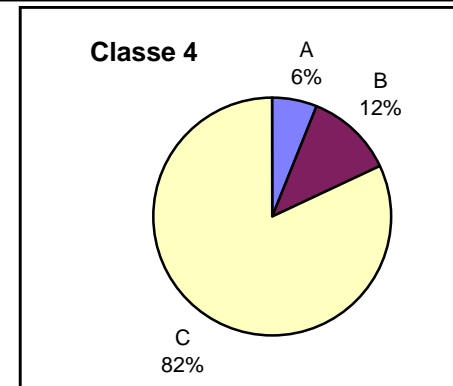
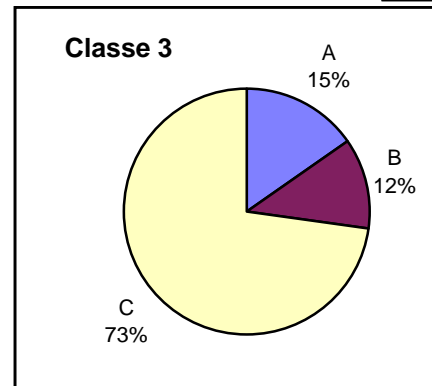
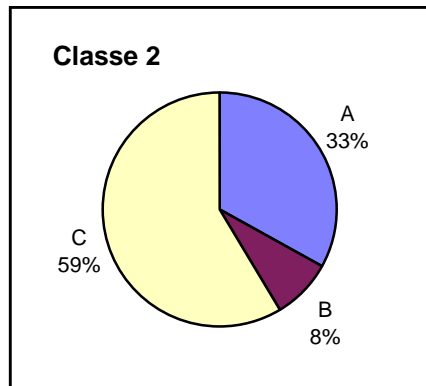
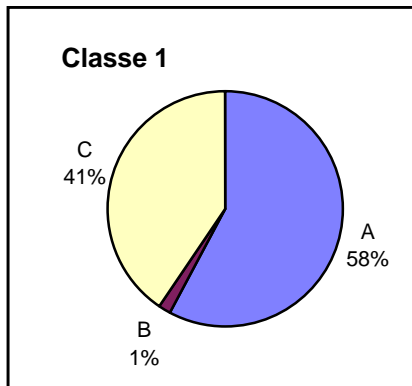
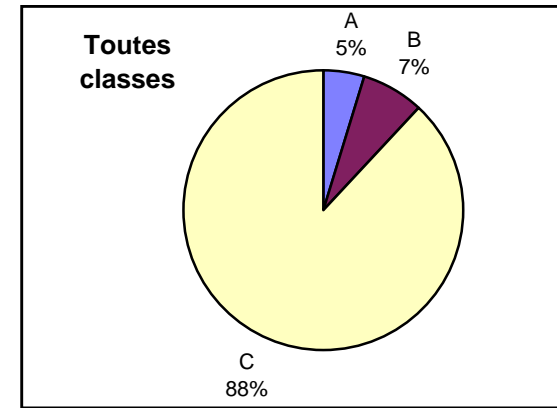
Minutes moyennes	Classes X/8								Tous	
	1	2	3	4	5	6	7	8		
Prest. OPAS										
A	13,19	10	7,29	6,68	6	3,64	3,36	14,19	5,58	
B	0,4	2,67	5,66	8,54	9,47	11,64	15,86	79,61	9,69	
C	8,77	19,96	36,19	57,73	95,4	154,07	210,46	241,7	108,4	
Tous	22,36	32,63	49,14	72,95	110,87	169,35	229,68	335,5	123,67	



Genève

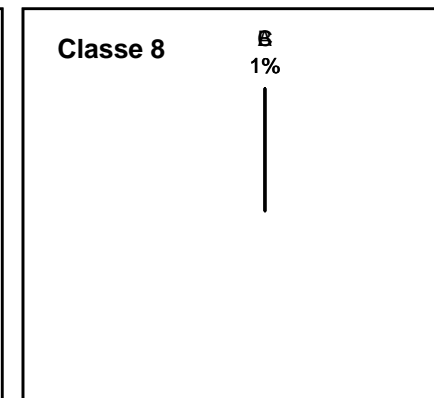
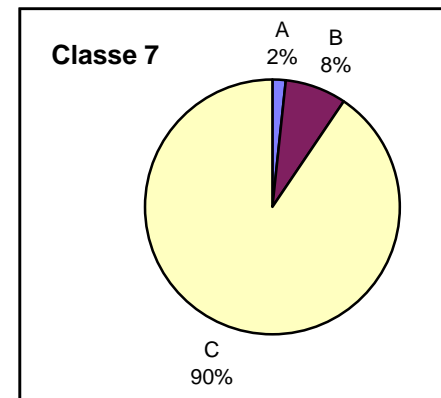
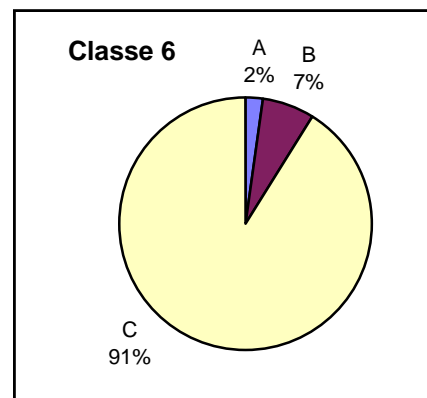
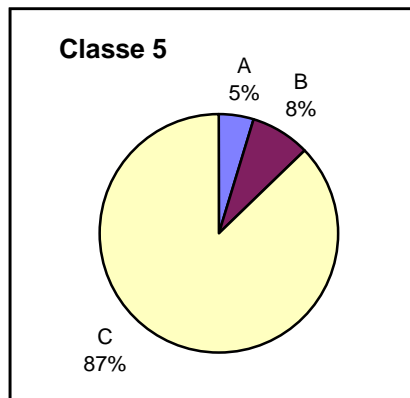
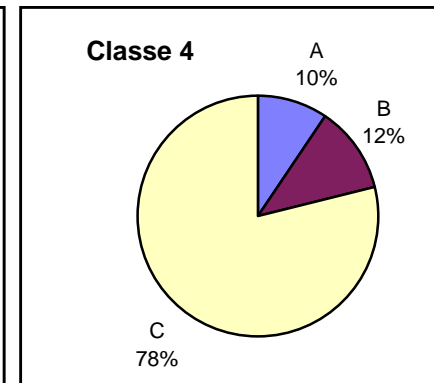
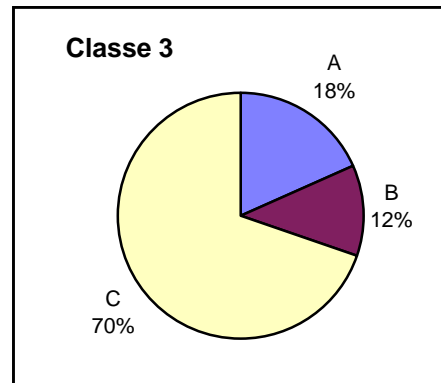
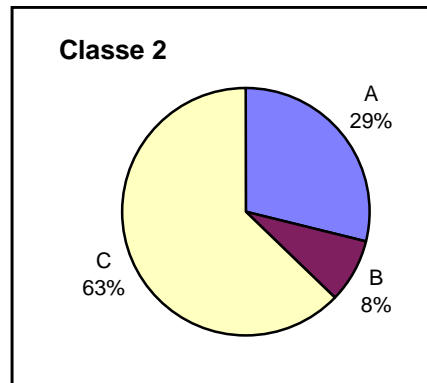
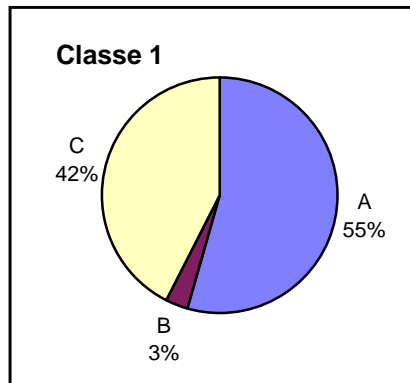
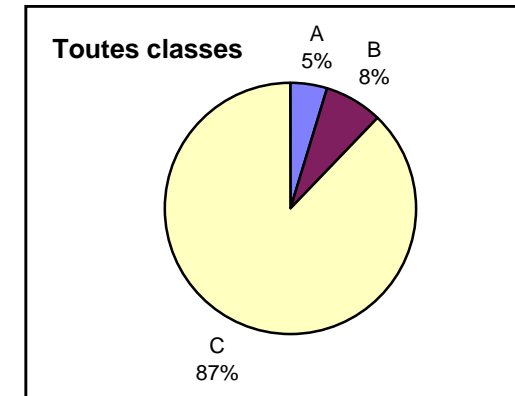
Données PLAISIR - Octobre 1999 – Répartition des prestations OPAS par classe - Genève

Minutes moyennes	Classes X/8								
Prest. OPAS	1	2	3	4	5	6	7	8	Tous
A	13,08	10,62	7,44	4,49	3,93	2,96	2,54	0	5,27
B	0,33	2,6	5,76	8,5	8,04	10,41	13,54	0	8,34
C	9,18	18,78	35,48	59,19	99,57	154,59	213,7	0	101,08
Tous	22,59	32	48,68	72,18	111,54	167,96	229,78	0	114,69



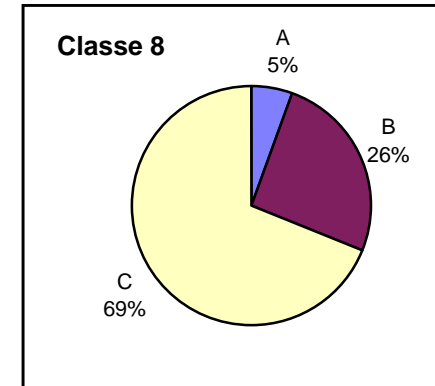
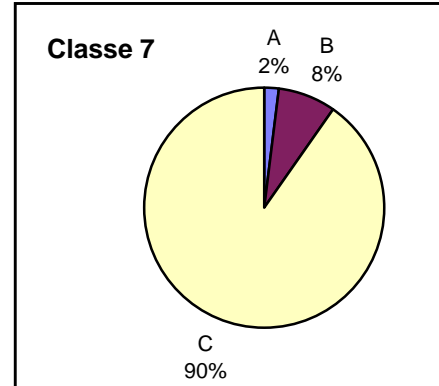
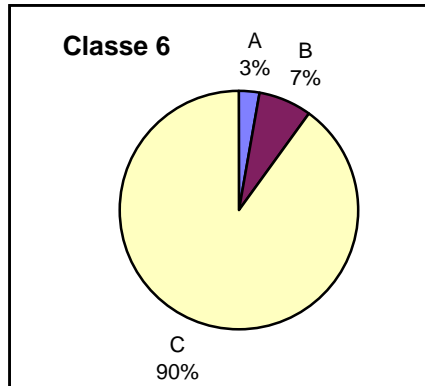
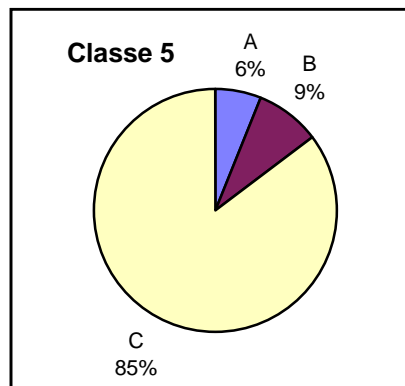
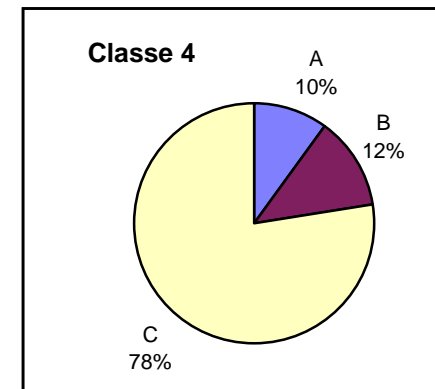
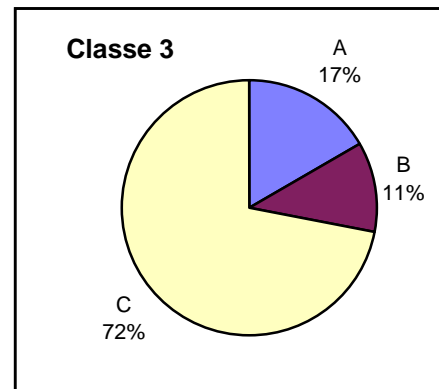
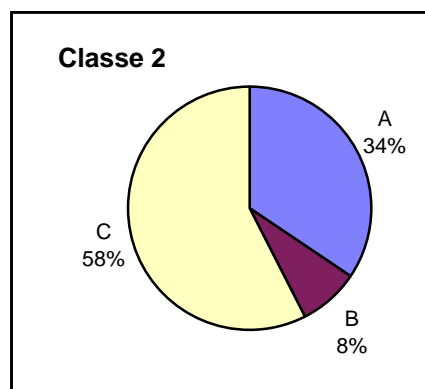
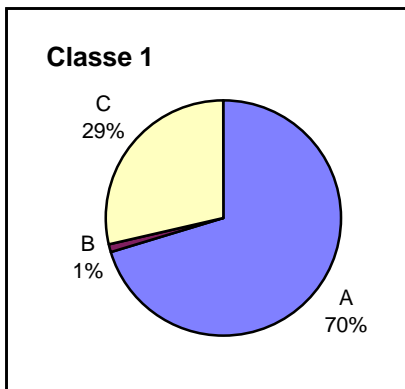
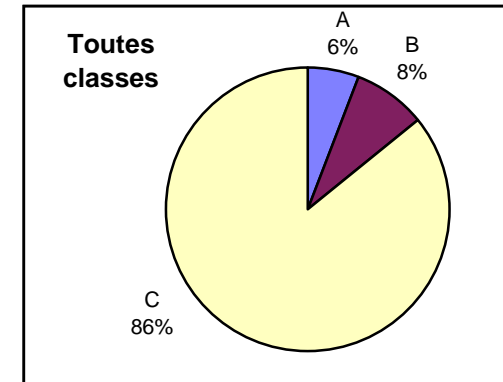
Données PLAISIR - Octobre 1999 – Répartition des prestations OPAS par classe - Jura

Minutes moyennes	Classes X/8								Tous	
	1	2	3	4	5	6	7	8		
Prest. OPAS										
A	11,35	9,24	8,97	6,79	5,37	3,56	3,67	0	5,56	
B	0,68	2,64	5,81	8,25	9	11,42	17,52	0	9	
C	8,85	20,04	33,99	56,16	98,55	153,63	206,2	0	104,12	
Tous	20,88	31,92	48,77	71,2	112,92	168,61	227,39	0	118,68	



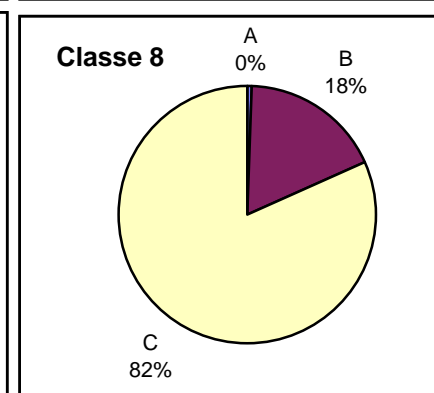
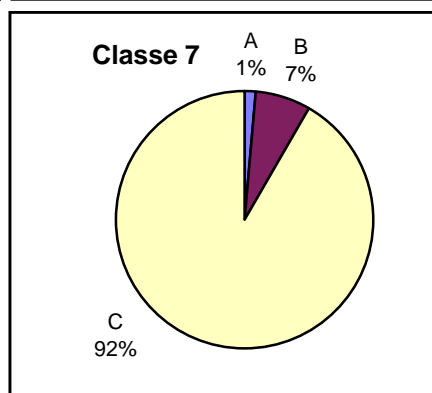
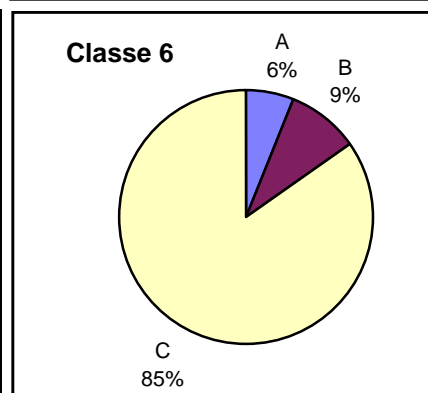
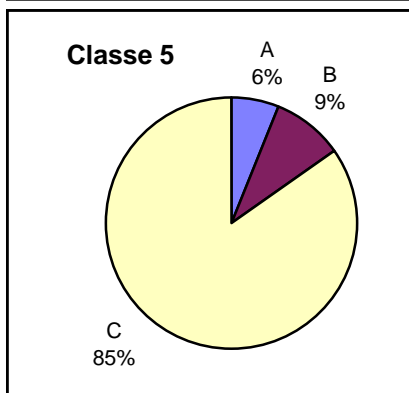
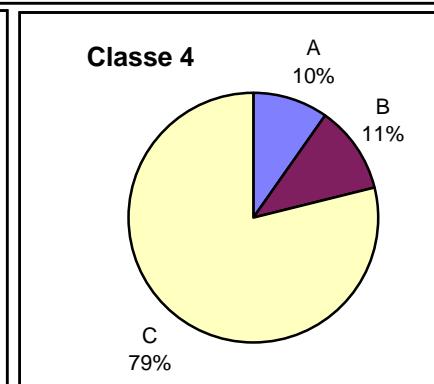
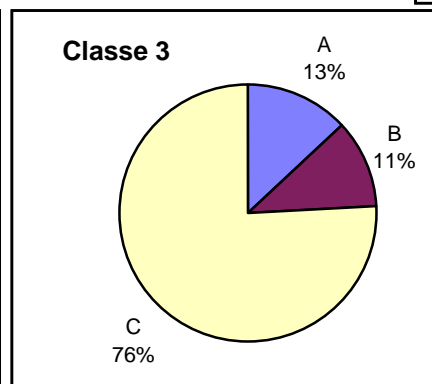
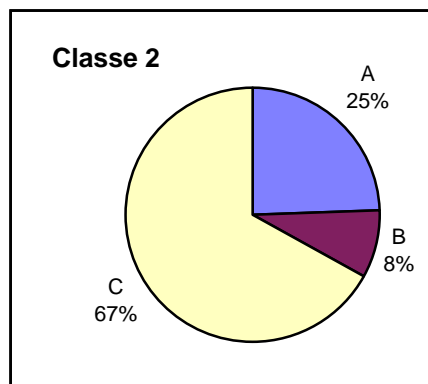
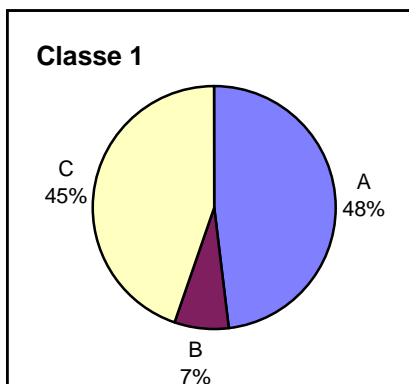
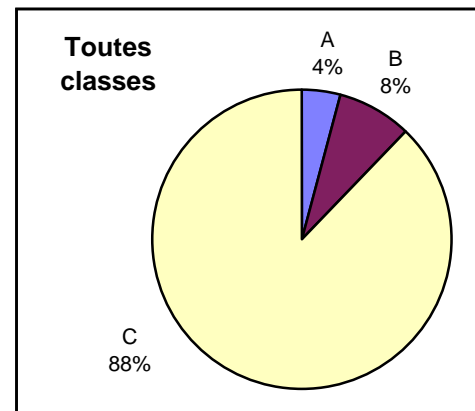
Données PLAISIR - Octobre 1999 – Répartition des prestations OPAS par classe - Neuchâtel

Minutes moyennes	Classes X/8								Tous	
	1	2	3	4	5	6	7	8		
Prest. OPAS										
A	15,51	11,3	8,2	7,4	6,79	4,57	4,39	18,42	6,69	
B	0,22	2,61	5,49	9,16	9,61	12,07	17,87	86,61	9,7	
C	6,32	18,85	35,18	56,94	94,44	151,18	208,33	232,21	99,6	
Tous	22,05	32,76	48,87	73,5	110,84	167,82	230,59	337,24	115,99	



Répartition des prestations OPAS par classe, Octobre 1999 - Vaud

Minutes moyennes Prest. OPAS	Classes X/8								Tous
	1	2	3	4	5	6	7	8	
A	10,83	8,25	6,42	7,18	6,69	3,65	3,35	1,5	5,34
B	1,6	2,82	5,64	8,34	10,1	12,1	16,06	58,62	10,59
C	10,1	22,55	37,57	57,54	93,58	154,85	210,12	270,17	114,82
Tous	22,53	33,62	49,63	73,06	110,37	170,6	229,53	330,29	130,75

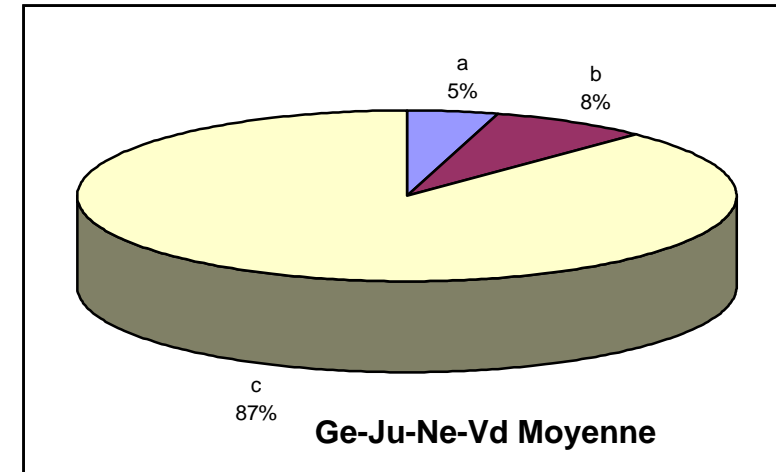
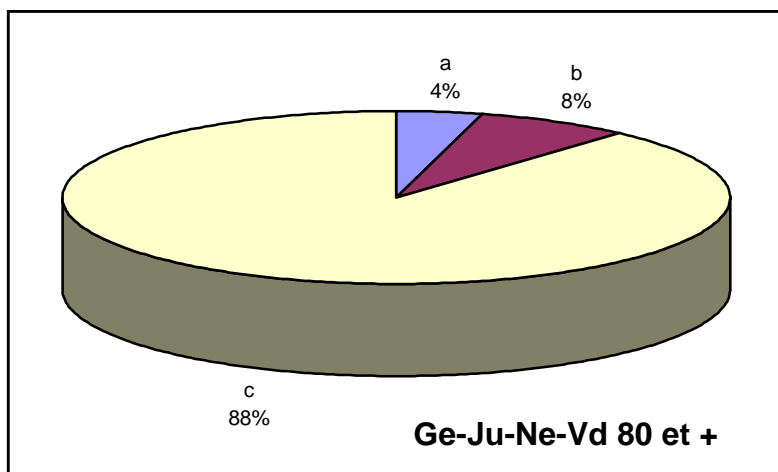
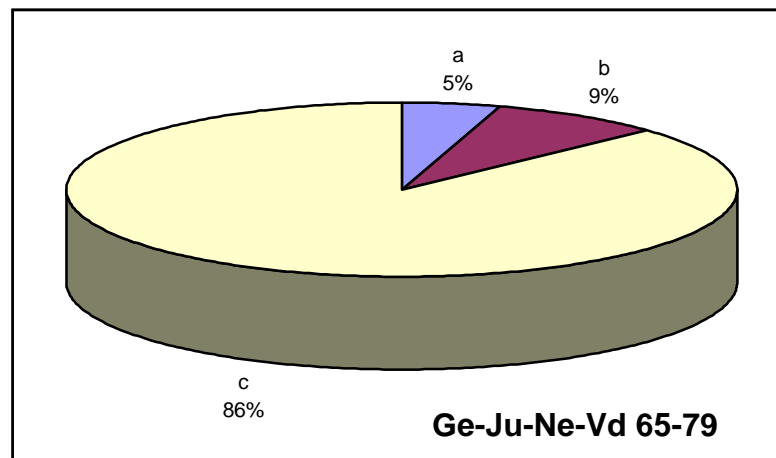
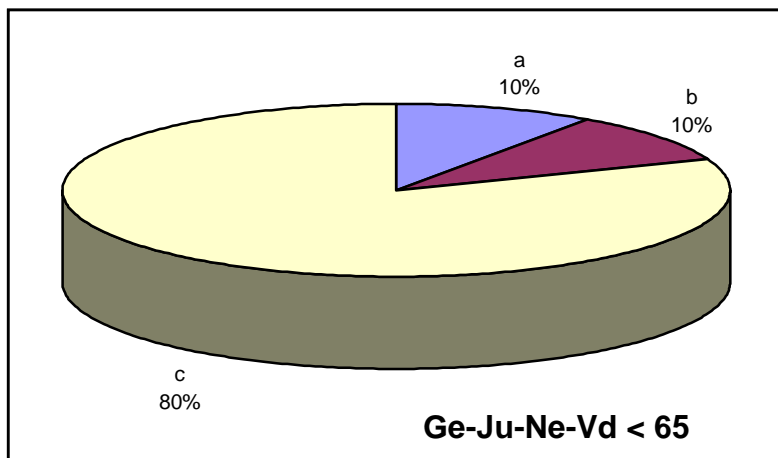


Données PLAISIR - Canton de Ge-Ju-Ne-Vd

Période Octobre 1999

Représentation de la consommation moyenne de soins selon les classes d'âge et les catégories OPAS (en minutes)

	OPAS	Ge-Ju-Ne-Vd < 65 n = 861	Ge-Ju-Ne-Vd 65-79 n = 2'544	Ge-Ju-Ne-Vd 80 et + n = 8'112	Ge-Ju-Ne-Vd Total n = 11'517
Instructions et conseils	a	9,60	5,36	5,22	5,57
Traitements	b	9,65	9,98	9,69	9,69
Soins de base	c	80,59	101,46	113,54	108,40
Total OPAS		99,84	116,80	128,45	123,66

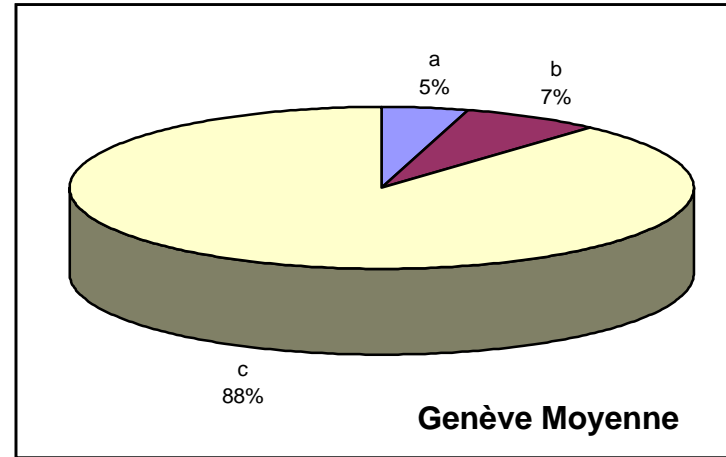
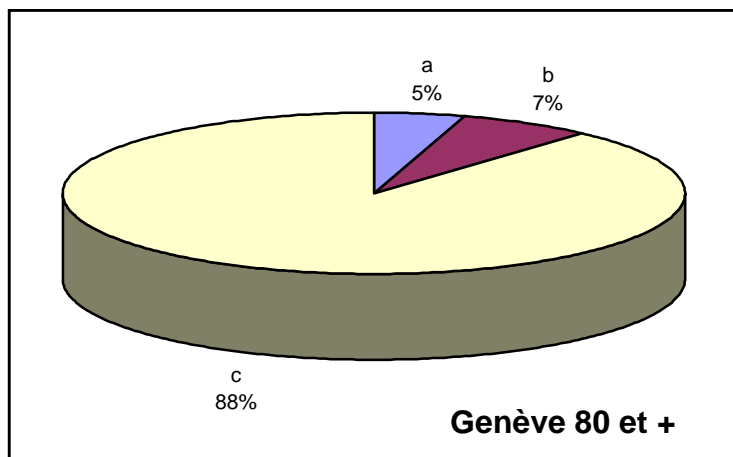
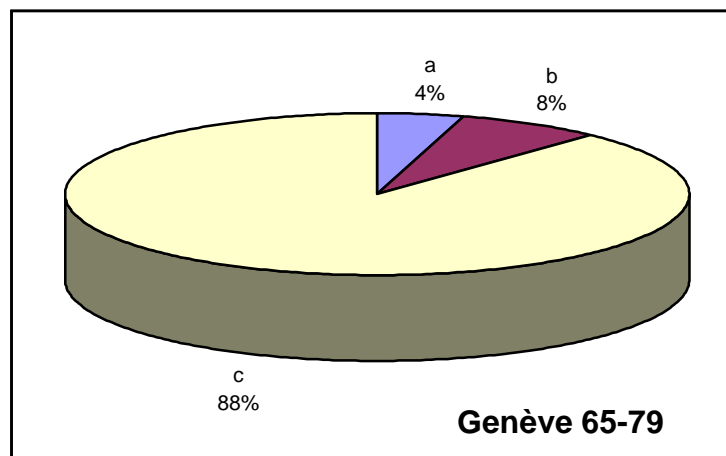
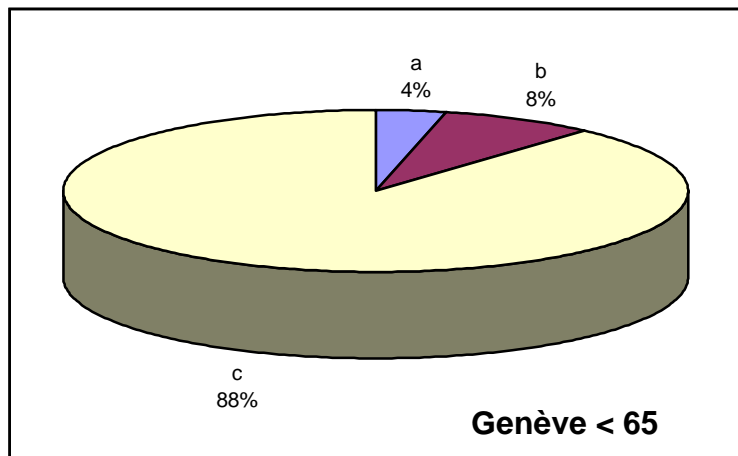


Données PLAISIR - Canton de Genève

Période Octobre 1999

Représentation de la consommation moyenne de soins selon les classes d'âge et les catégories OPAS (en minutes)

	OPAS	Genève < 65 n = 84	Genève 65-79 n = 574	Genève 80 et + n = 2'379	Genève Total n = 3'037
Instructions et conseils	a	2,95	5,02	5,36	5,23
Traitements	b	6,54	8,75	8,20	8,25
Soins de base	c	72,56	102,01	103,35	102,25
Total OPAS		82,05	115,78	116,91	115,73

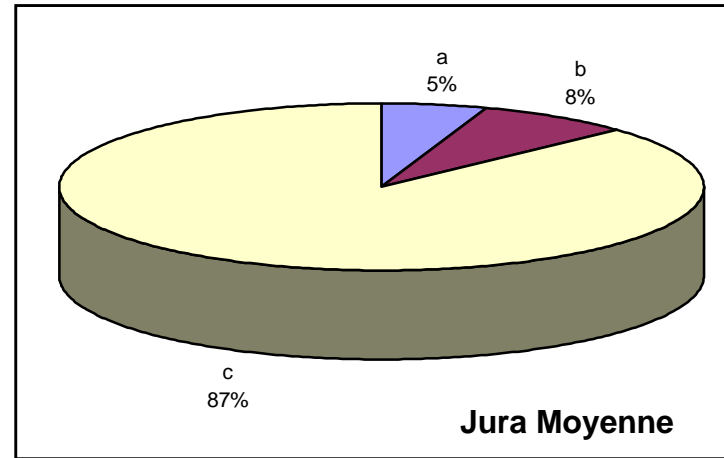
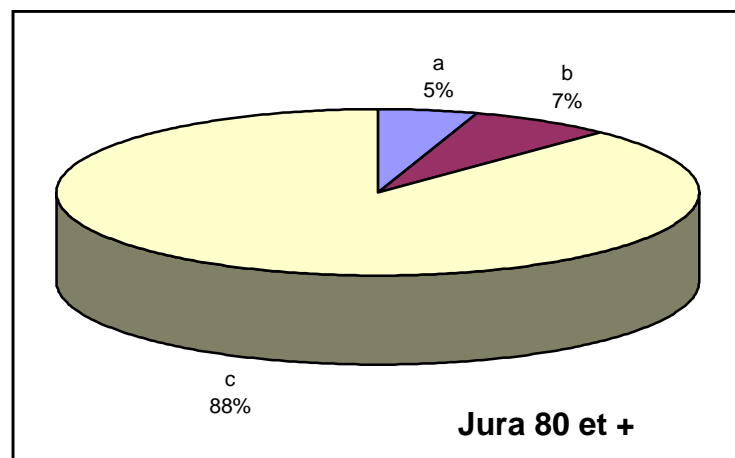
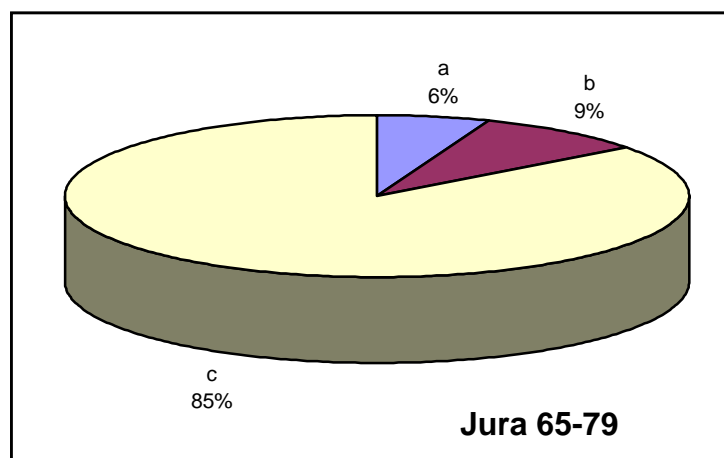
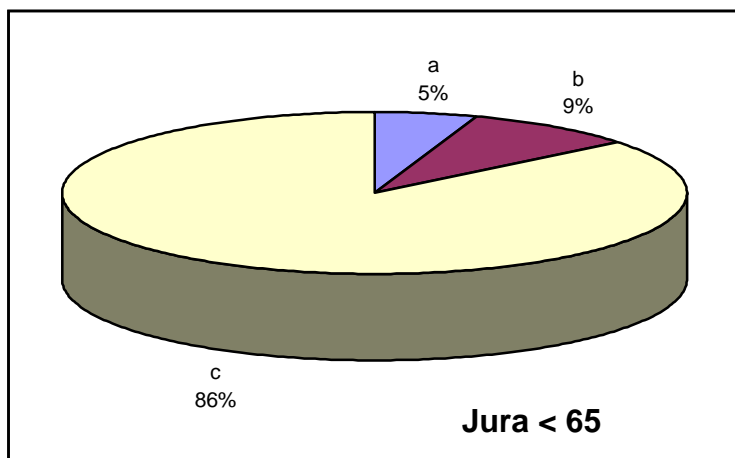


Données PLAISIR - Canton de Jura

Période Octobre 1999

Représentation de la consommation moyenne de soins selon les classes d'âge et les catégories OPAS (en minutes)

	OPAS	Jura < 65 n = 25	Jura 65-79 n = 190	Jura 80 et + n = 476	Jura Total n = 691
Instructions et conseils	a	4,60	5,94	6,10	6,00
Traitements	b	7,80	9,21	9,15	9,12
Soins de base	c	74,91	88,21	108,25	99,97
Total OPAS		87,31	103,36	123,50	115,09

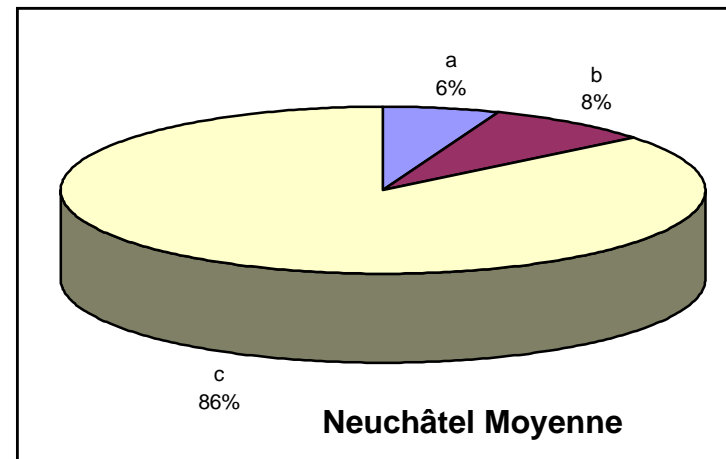
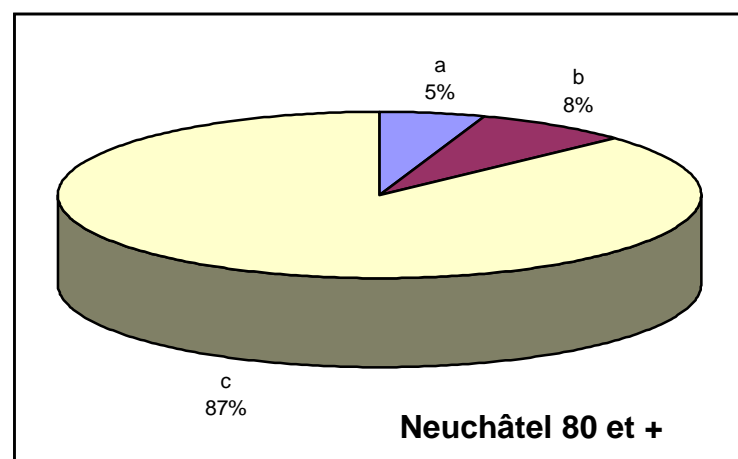
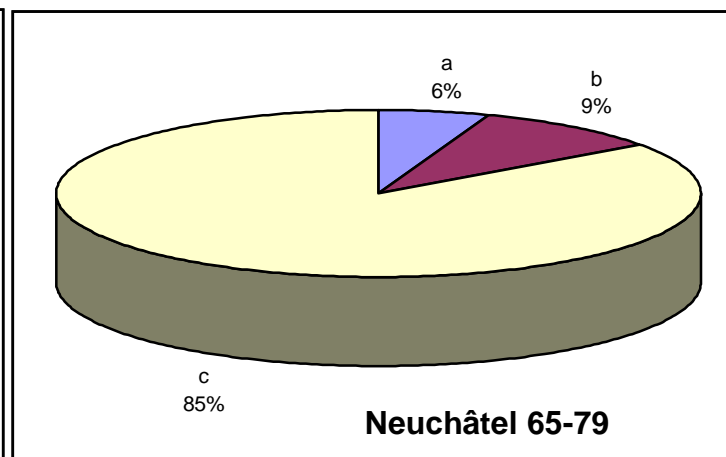
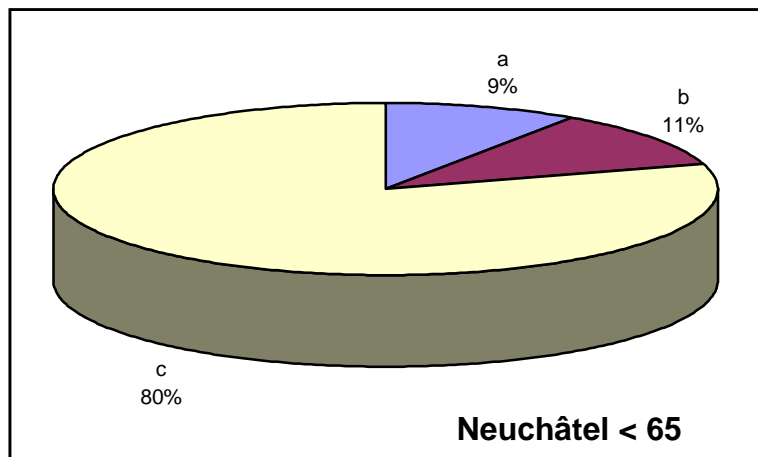


Données PLAISIR - Canton de Neuchâtel

Période Octobre 1999

Représentation de la consommation moyenne de soins selon les classes d'âge et les catégories OPAS (en minutes)

	OPAS	Neuchâtel < 65 n = 217	Neuchâtel 65-79 n = 557	Neuchâtel 80 et + n = 1'461	Neuchâtel Total n = 2'235
Instructions et conseils	a	10,11	6,35	6,37	6,73
Traitements	b	11,47	10,55	9,44	9,91
Soins de base	c	84,86	95,85	105,95	101,38
Total OPAS		106,44	112,75	121,76	118,02

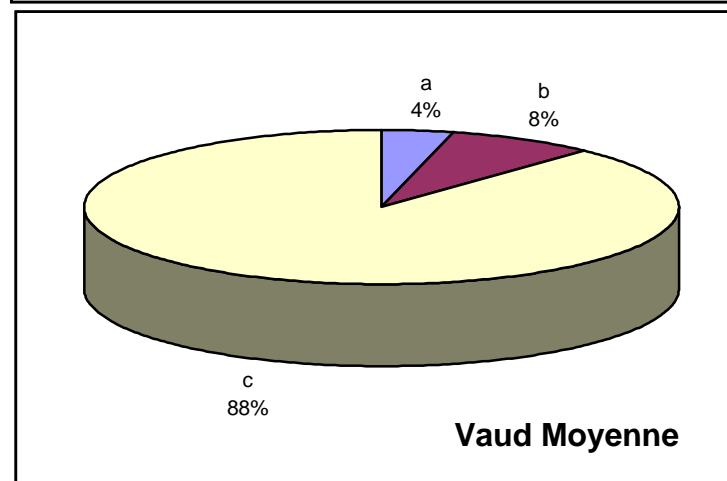
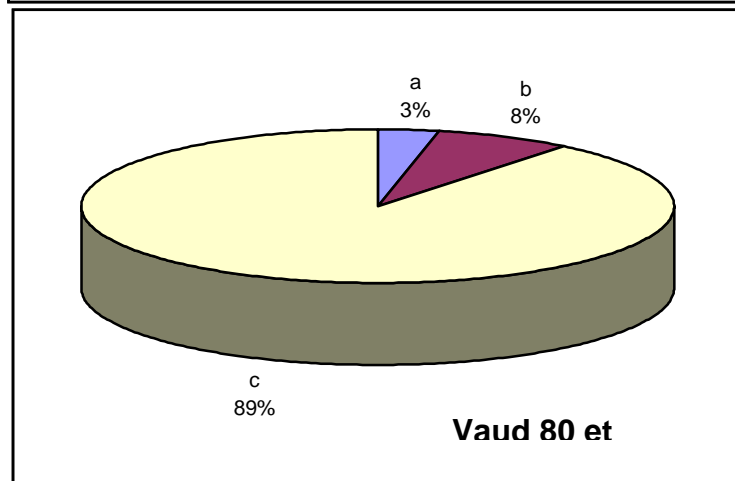
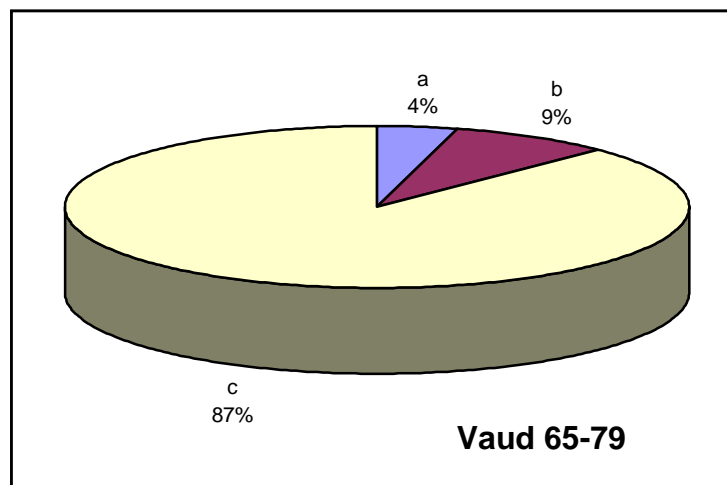
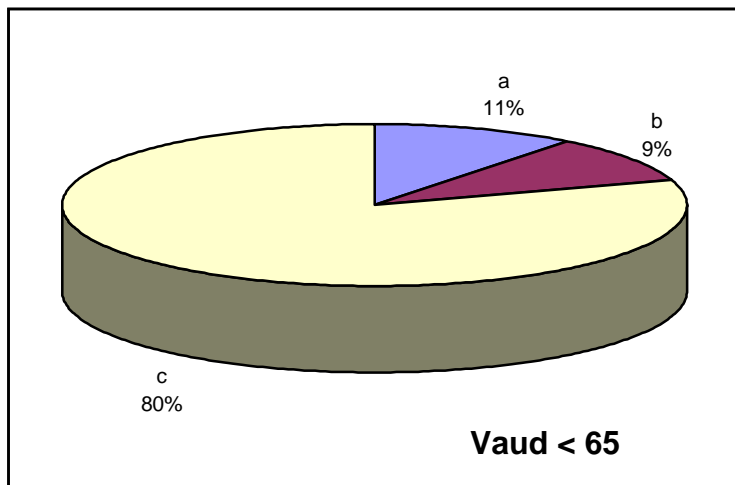


Données PLAISIR - Canton de Vaud

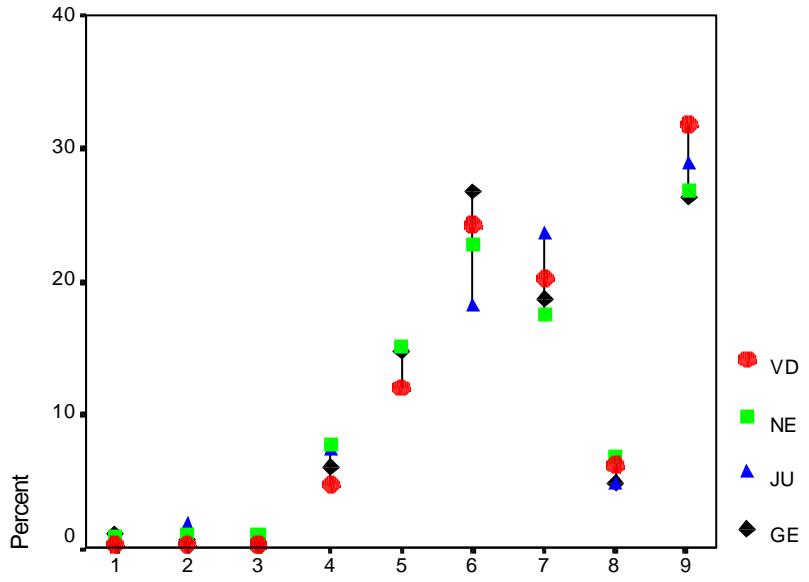
Période Octobre 1999

Représentation de la consommation moyenne de soins selon les classes d'âge et les catégories OPAS (en minutes)

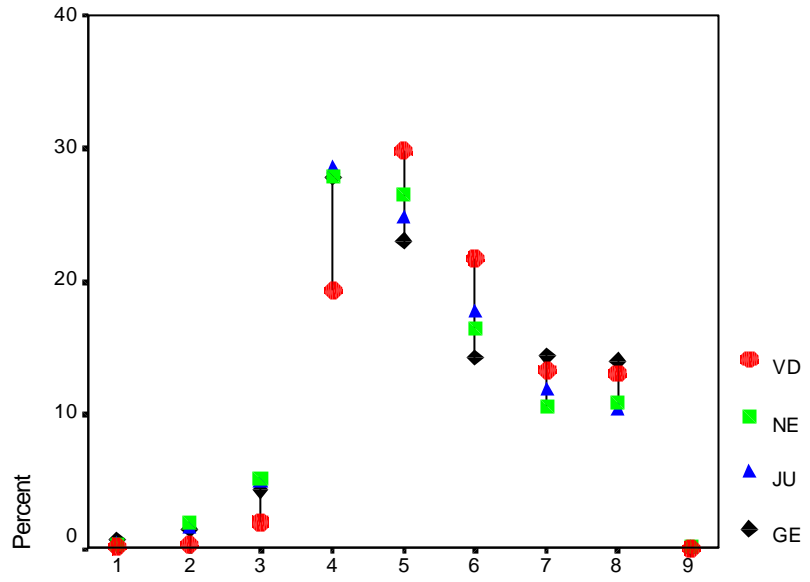
	OPAS	Vaud < 65 n = 535	Vaud 65-79 n = 1223	Vaud 80 et + n = 3'796	Vaud Total n = 5554
Instructions et conseils	a	10,70	4,98	4,58	5,25
Traitements	b	9,50	10,42	10,59	10,44
Soins de base	c	80,40	106,75	123,51	115,67
Total OPAS		100,60	122,15	138,68	131,36



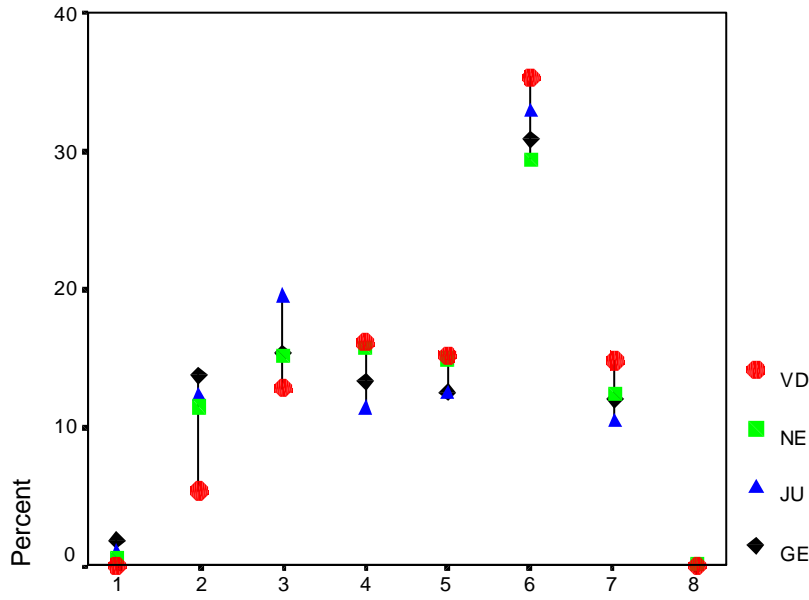
Données PLAISIR - Octobre 1999 – Distribution (en %) des indicateurs de mobilité physique, orientation, classes de prise en charge et d'autonomie selon les cantons – Toute population



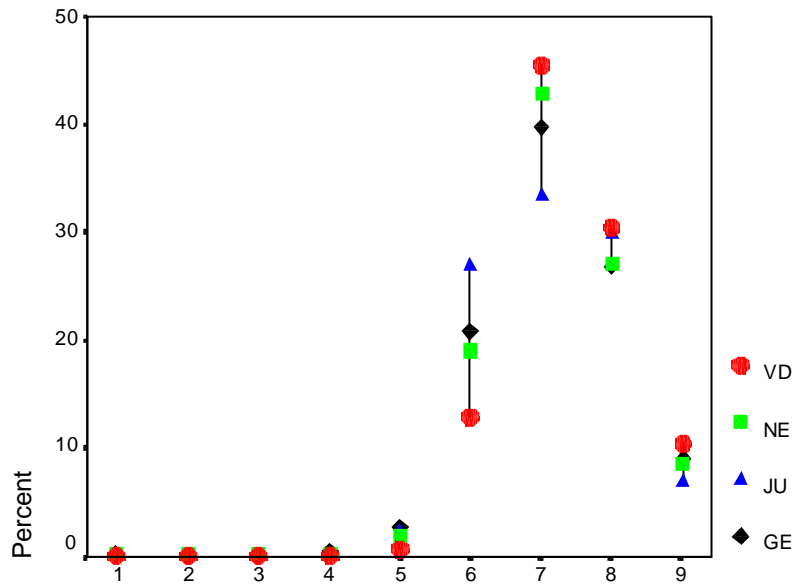
Mobilité Physique



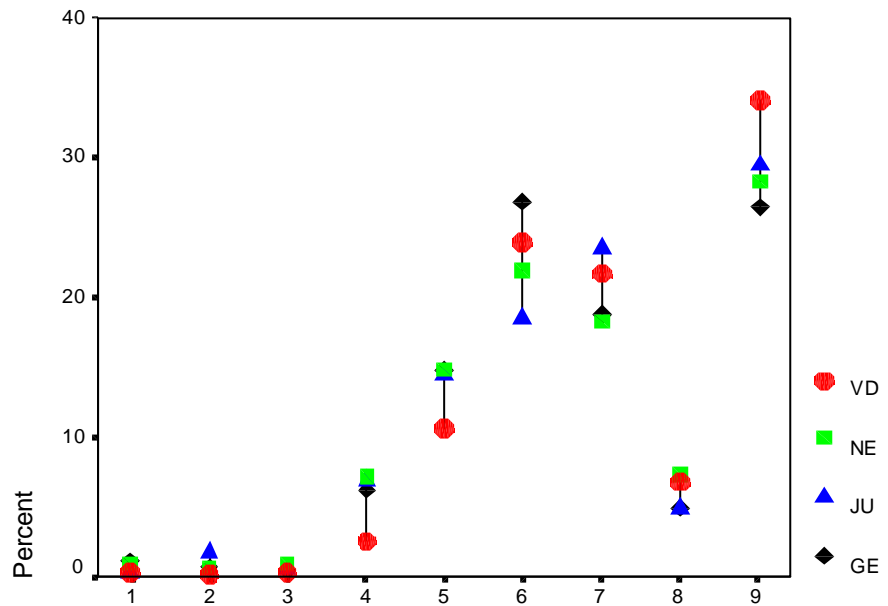
Orientation



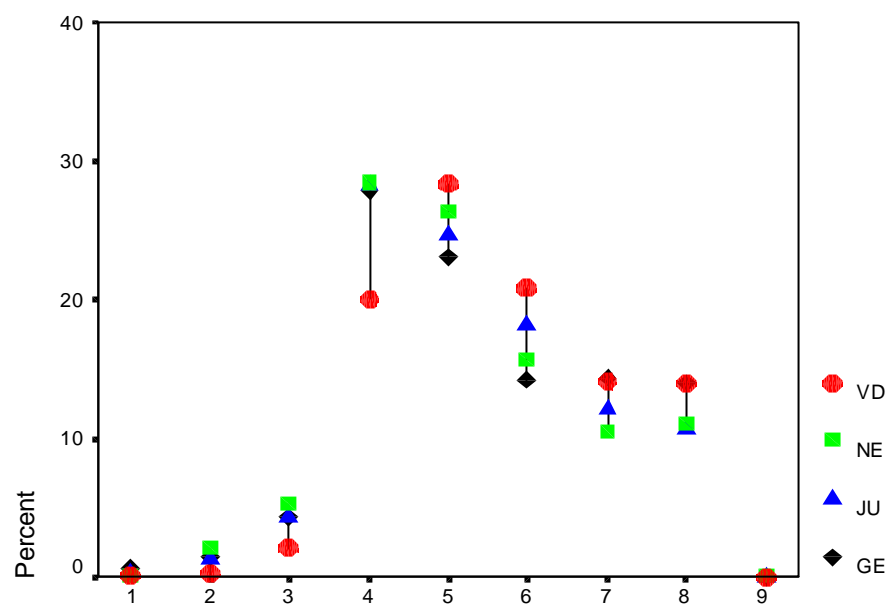
8 classes de prise en charge PLAISIR



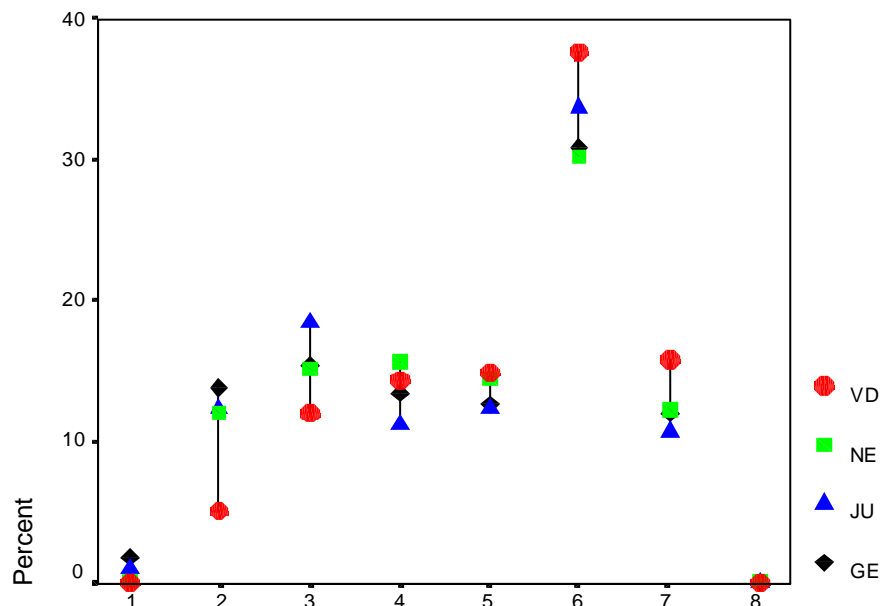
Autonomie



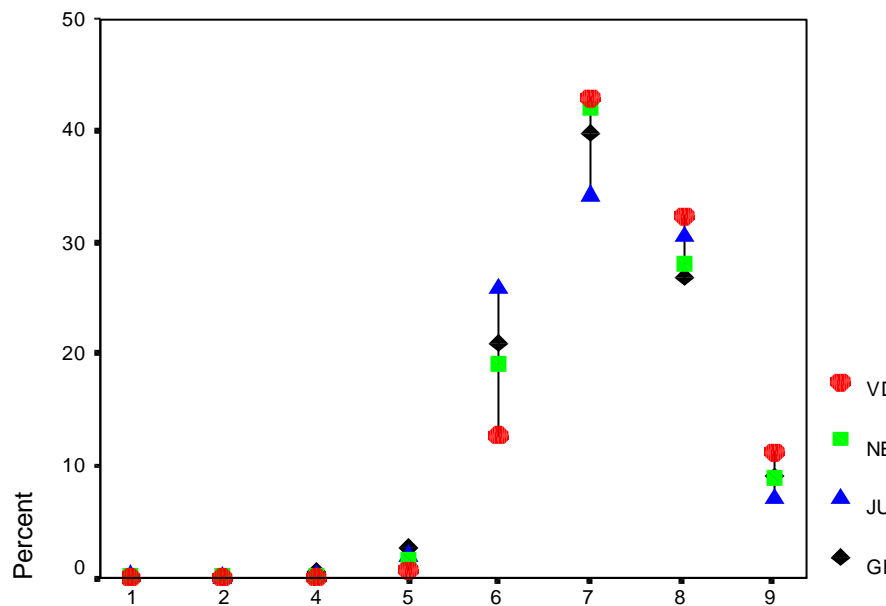
Mobilité Physique - sans inst. psychosociaux et handicapés



Orientation - sans inst. psychosociaux et handicapés

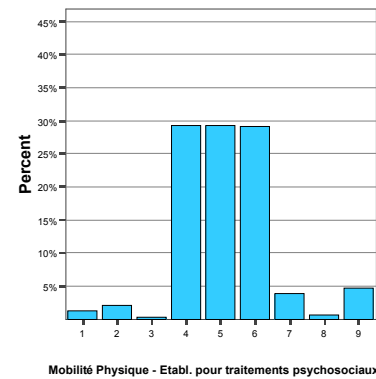
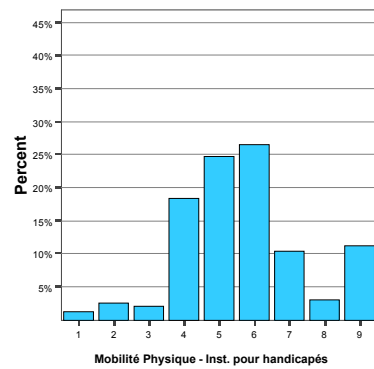
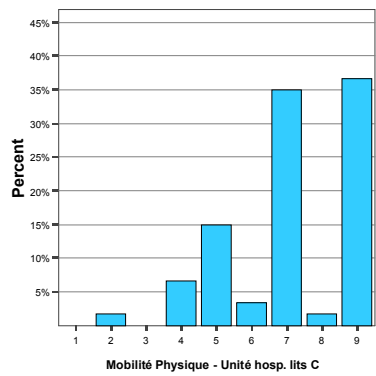
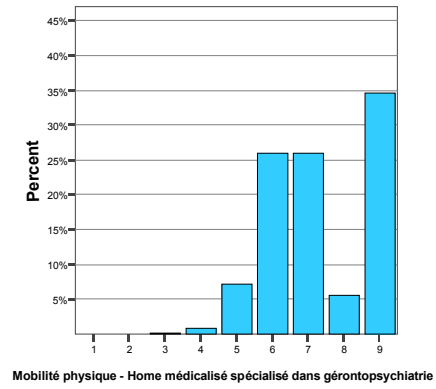
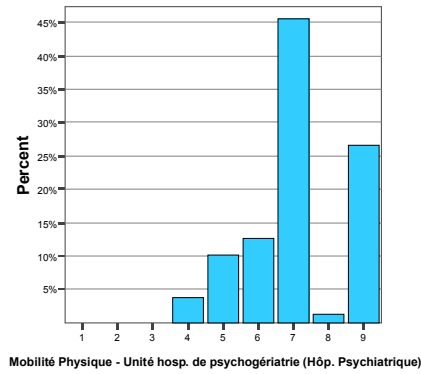
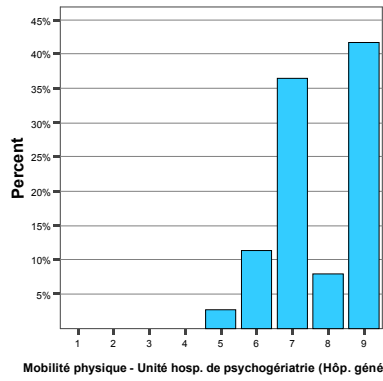
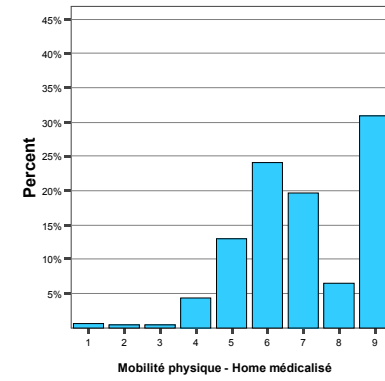
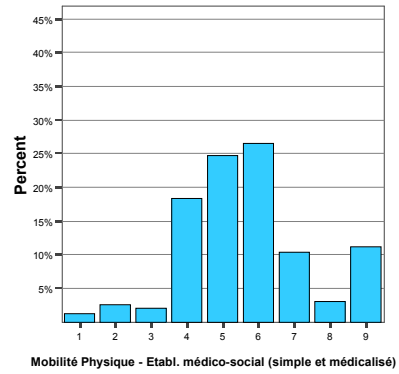
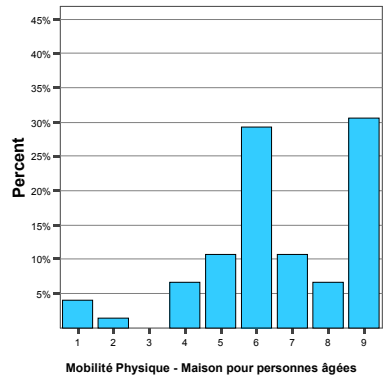


8 classes de prise en charge PLAISIR - sans inst. psychosociaux et handic.

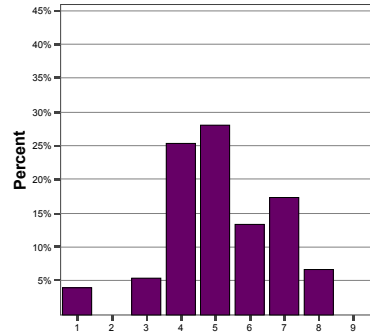


AUTONOMIE - sans inst. psychosociaux et handicapés

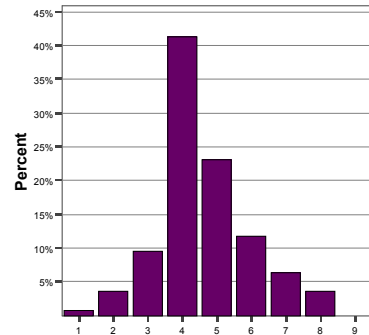
Données PLAISIR - Octobre 1999 – Indicateurs de mobilité physique selon missions (%)



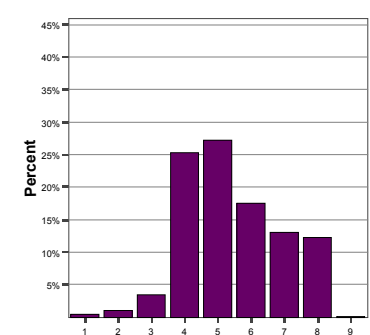
Données PLAISIR - Octobre 1999 – Indicateur orientation selon missions



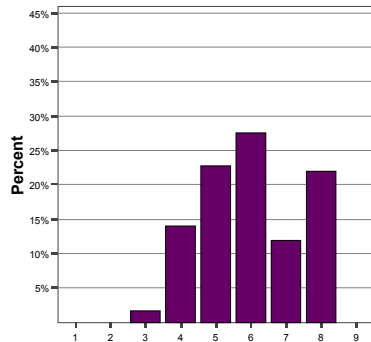
Orientation - Maisons pour personnes âgées



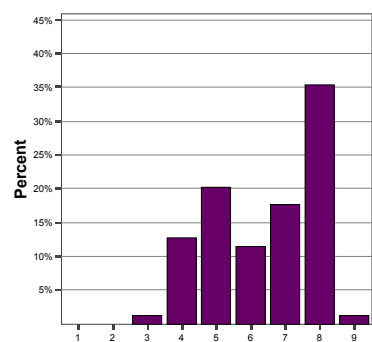
Orientation - Etabl. médico-social (simple et médicalisé)



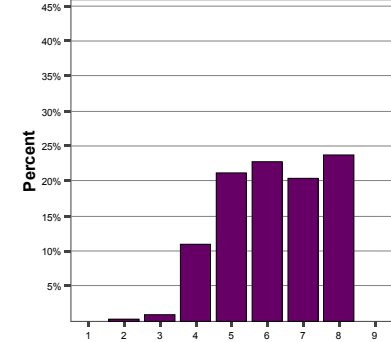
Orientation - Home médicalisé



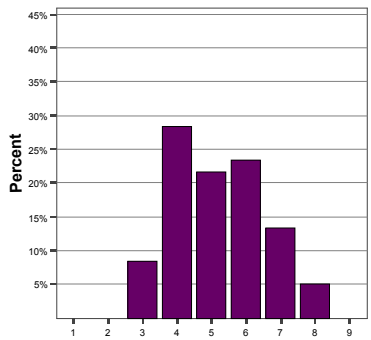
Orientation - Unité hosp. de psychogériatrie (Hôp. général)



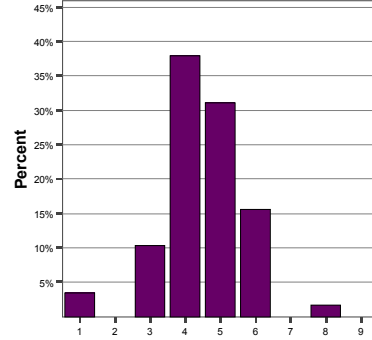
Orientation - Unité hosp. de psychogériatrie (Hôp. Psychiatrique)



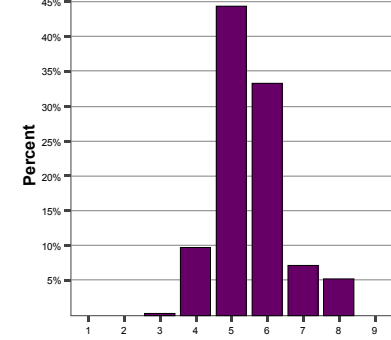
Orientation - Home médicalisé spécialisé dans gériopsychiatrie



Orientation - Unité hosp. lits C

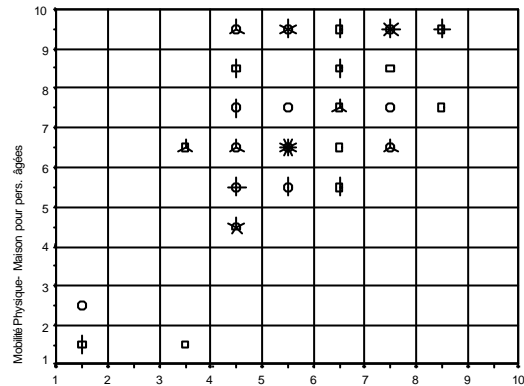


Orientation - Inst. pour handicapés

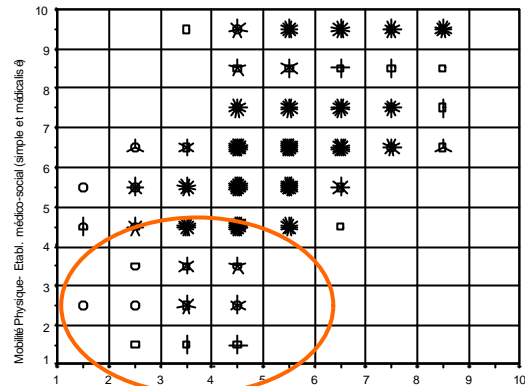


Orientation - Etabl. pour traitements psychosociaux

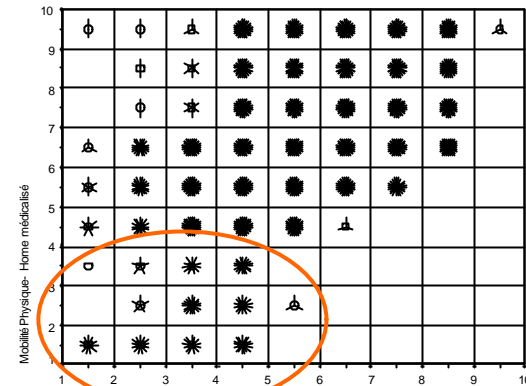
Données PLAISIR - Octobre 1999 – Distribution des cas des indicateurs de mobilité physique et d'orientation selon missions



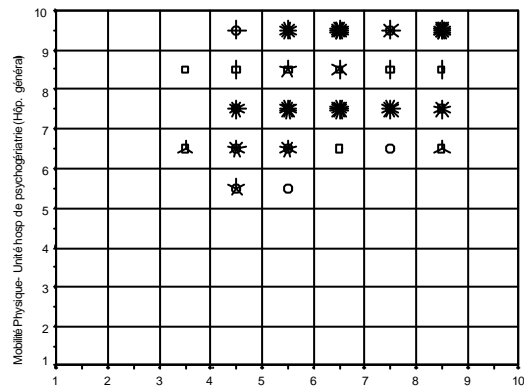
Orientation - Maison pour pers. âgées



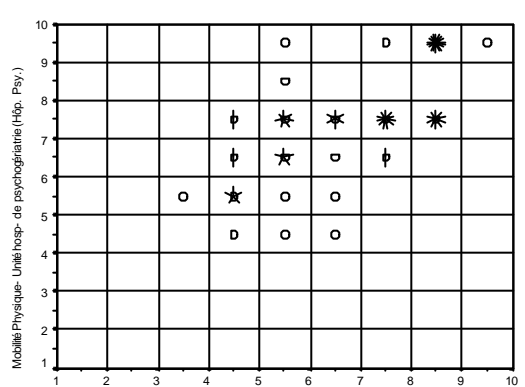
Orientation - Etabl. médico-social (simple et médicalisé)



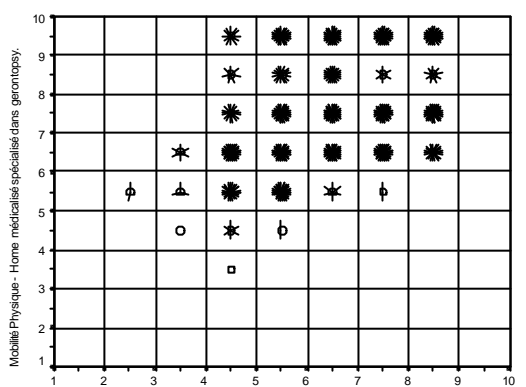
Orientation - Home médicalisé



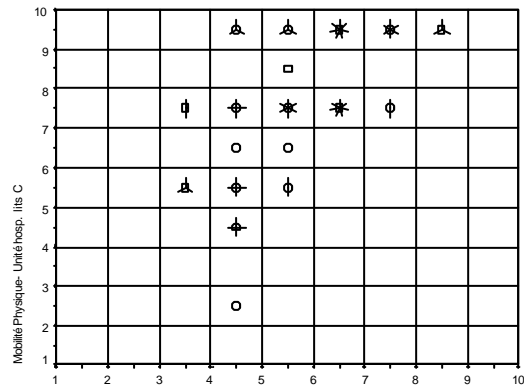
Orientation - Unité hosp. de psychogériatrie (Hôp. général)



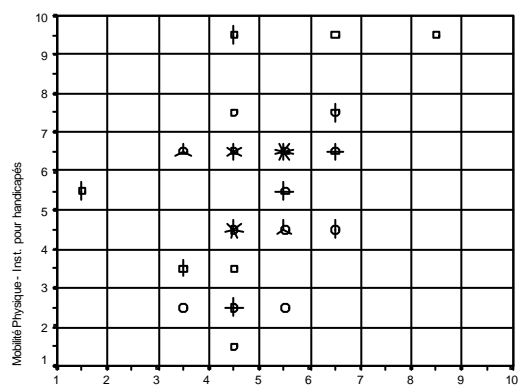
Orientation - Unité hosp de psychogériatrie (Hôp. Psychiatrique)



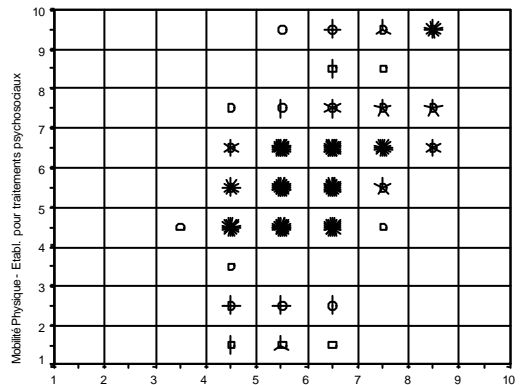
Orientation - Home médicalisé spécialisé dans gerontopsy.



Orientation - Unité hosp. lits C



Orientation - Inst. pour handicapés



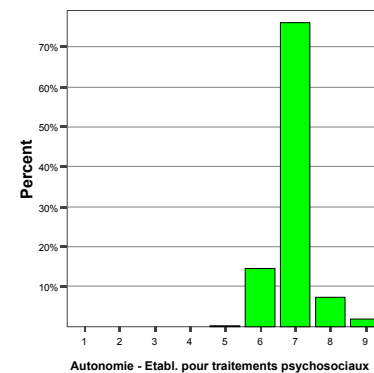
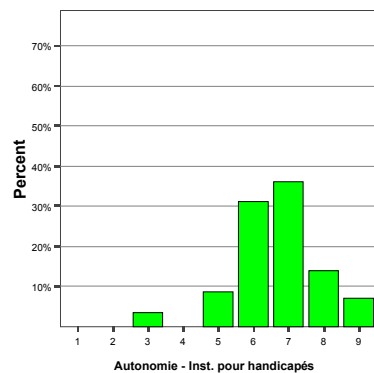
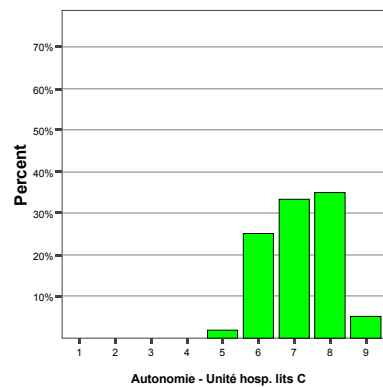
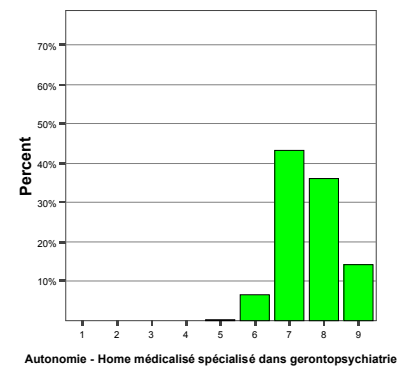
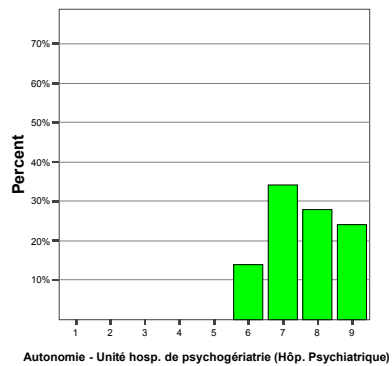
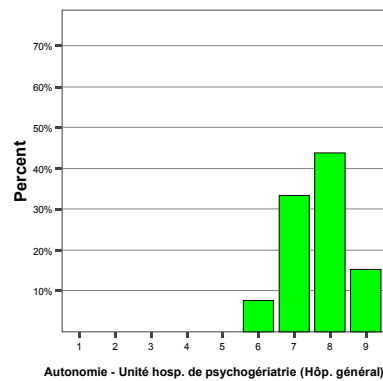
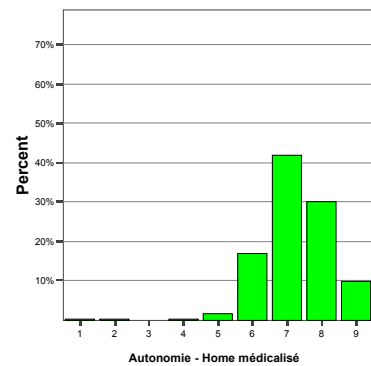
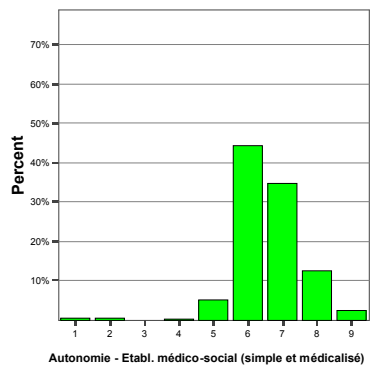
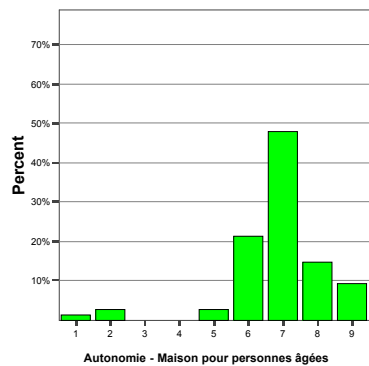
Orientation - Etabl. pour traitements psychosociaux

Echelle MOBILITE PHYSIQUE

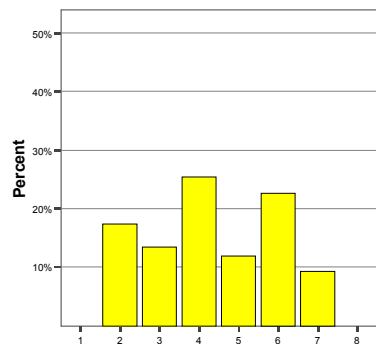
Légende :
Plus les points sont denses, plus il y a de cas.

Echelle ORIENTATION

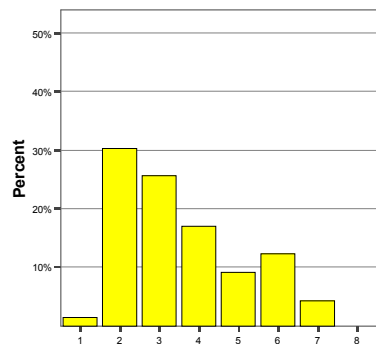
Données PLAISIR - Octobre 1999 – Indicateurs d'autonomie selon missions (%)



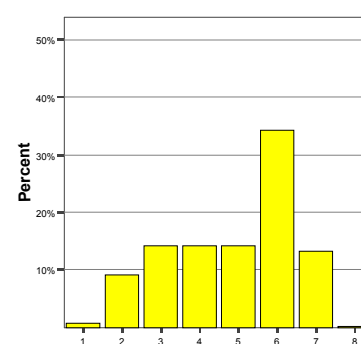
Données PLAISIR - Octobre 1999 – 8 classes de prise en charge PLAISIR selon missions (%)



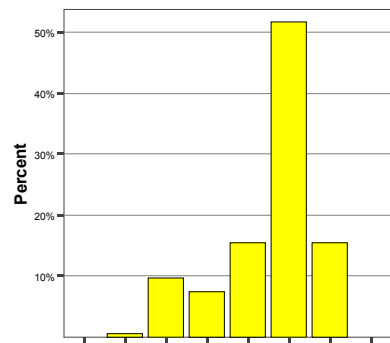
Classes PLAISIR - Maison pour personnes âgées



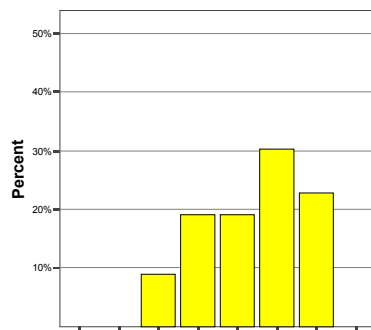
Classes PLAISIR - Etabl. médico-social (simple et médicalisé)



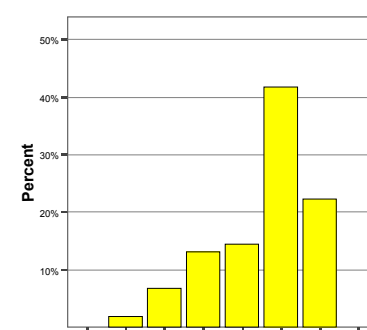
Classes PLAISIR - Home médicalisé



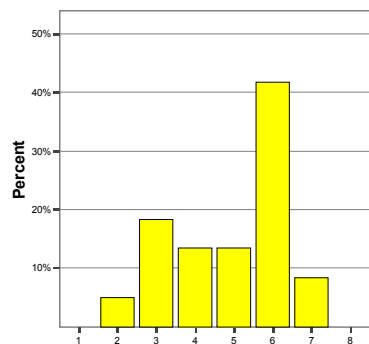
Classes PLAISIR - Unité hosp. de psychogériatrie (Hôp. général)



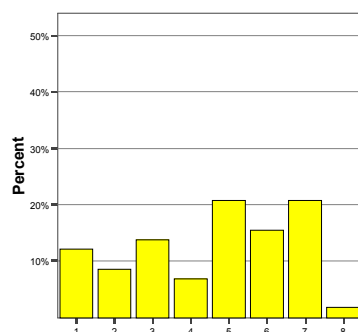
Classes PLAISIR - Unité hosp. de psychogériatrie (Hôp. Psychiatrique)



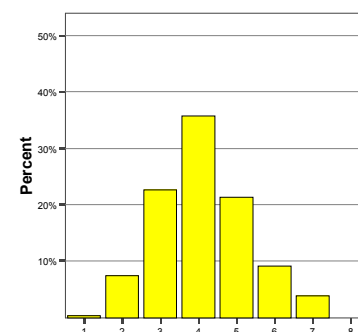
Classes PLAISIR - Home médicalisé spécialisé dans gerontopsychiatrie



Classes PLAISIR - Unité hosp. lits C



Classes PLAISIR - Inst. pour handicapés



Classes PLAISIR - Etabl. pour traitements psychosociaux